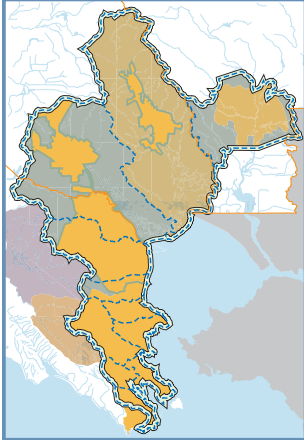
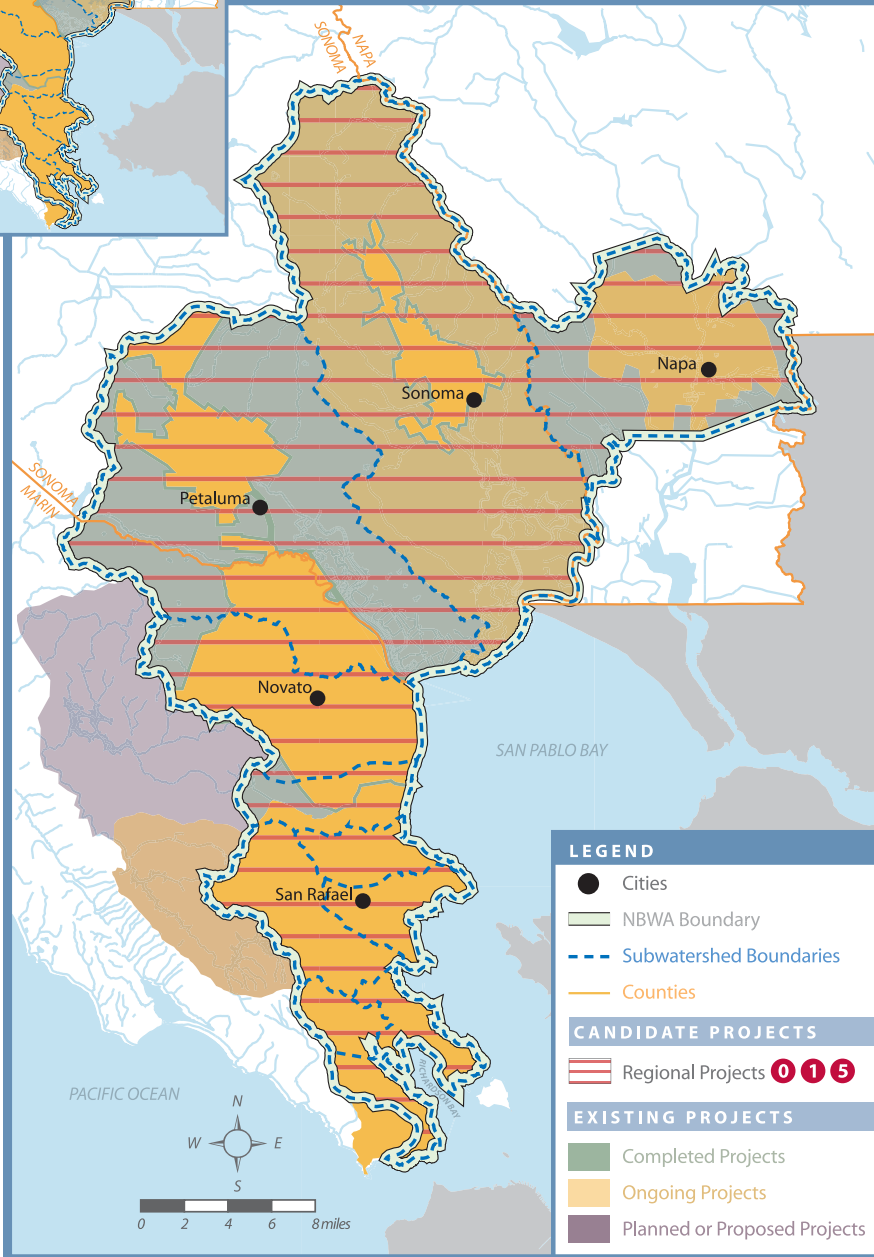


EXISTING PROJECTS



WS4: Optimize water conservation to offset potable and non-potable water needs.

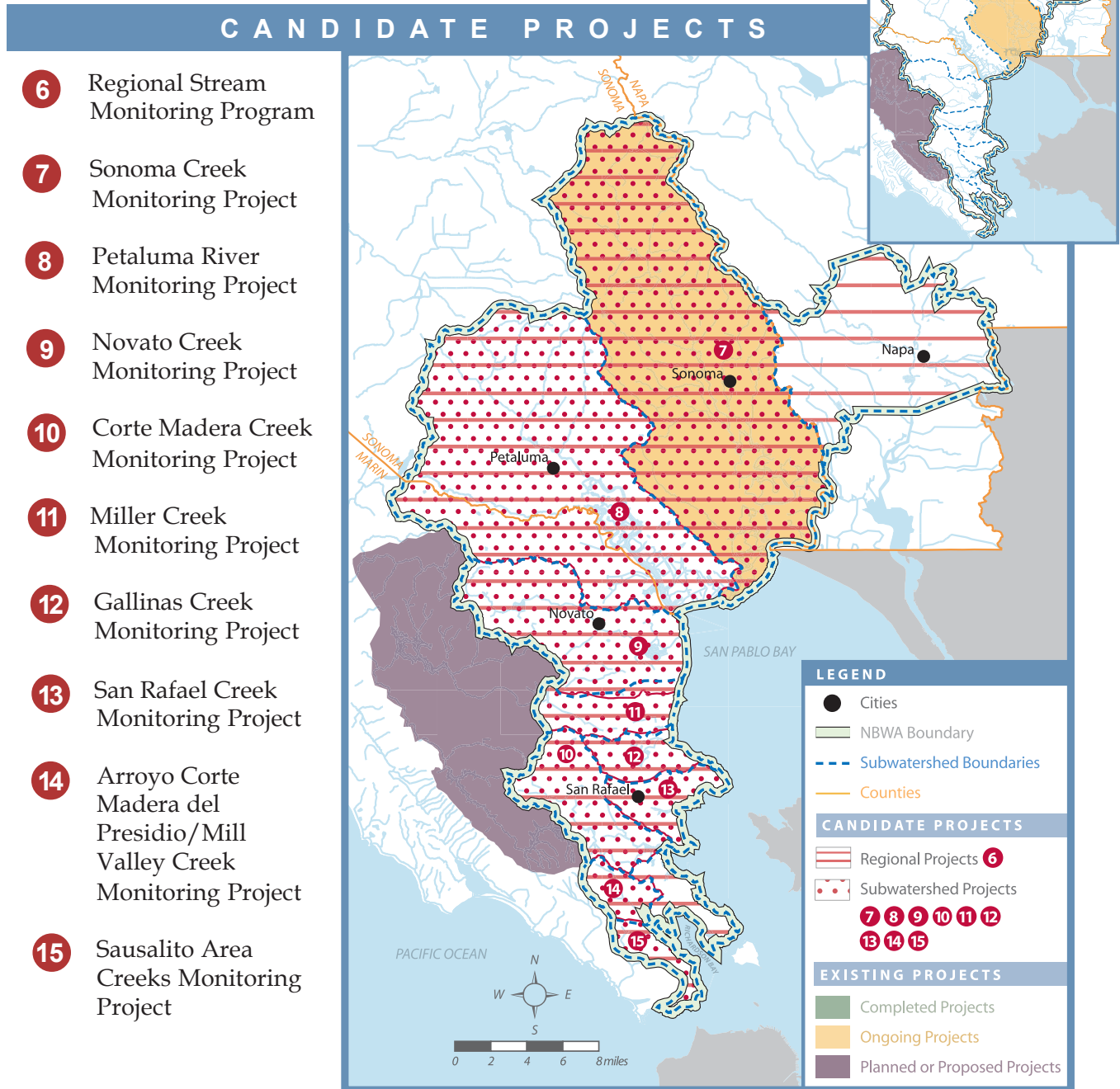
CANDIDATE PROJECTS



- 0** Regional Support for Member Agency Water Supply Implementation Projects
- 1** North Bay Regional Water Supply Master Plan
- 5** Landscape Irrigation Expo

NBWA has previously implemented and supported regional conservation based programs. Continued support of member agency conservation activities as well as finding further conservation opportunities through a regional master planning effort should be encouraged. Specifically, NBWA member agencies have expressed an interest in conducting a Landscape Irrigation Expo, which would bring experts on and manufactures of water efficient landscape irrigation techniques and technologies to inform North Bay landscapers and residents.

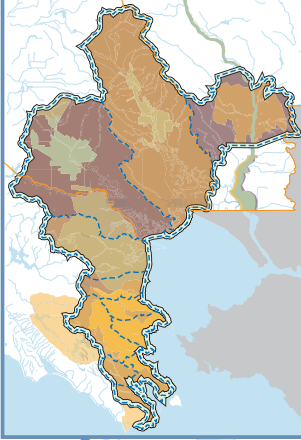
WS5: Support efforts to monitor surface water flows to identify in-stream water levels and associated timing necessary to maintain a healthy aquatic and wildlife habitat.



Monitoring surface water flows for creeks is a key activity toward assessing the health of watersheds and the habitats and species they support. The North Bay Watershed region has many streams and creeks where this type of monitoring is currently not being conducted. As such, a regional program to develop congruous monitoring techniques that can then be employed on a local level will allow for several cost efficient individual subwatershed implementation projects with resulting data that can be shared and used for comparison purposes.

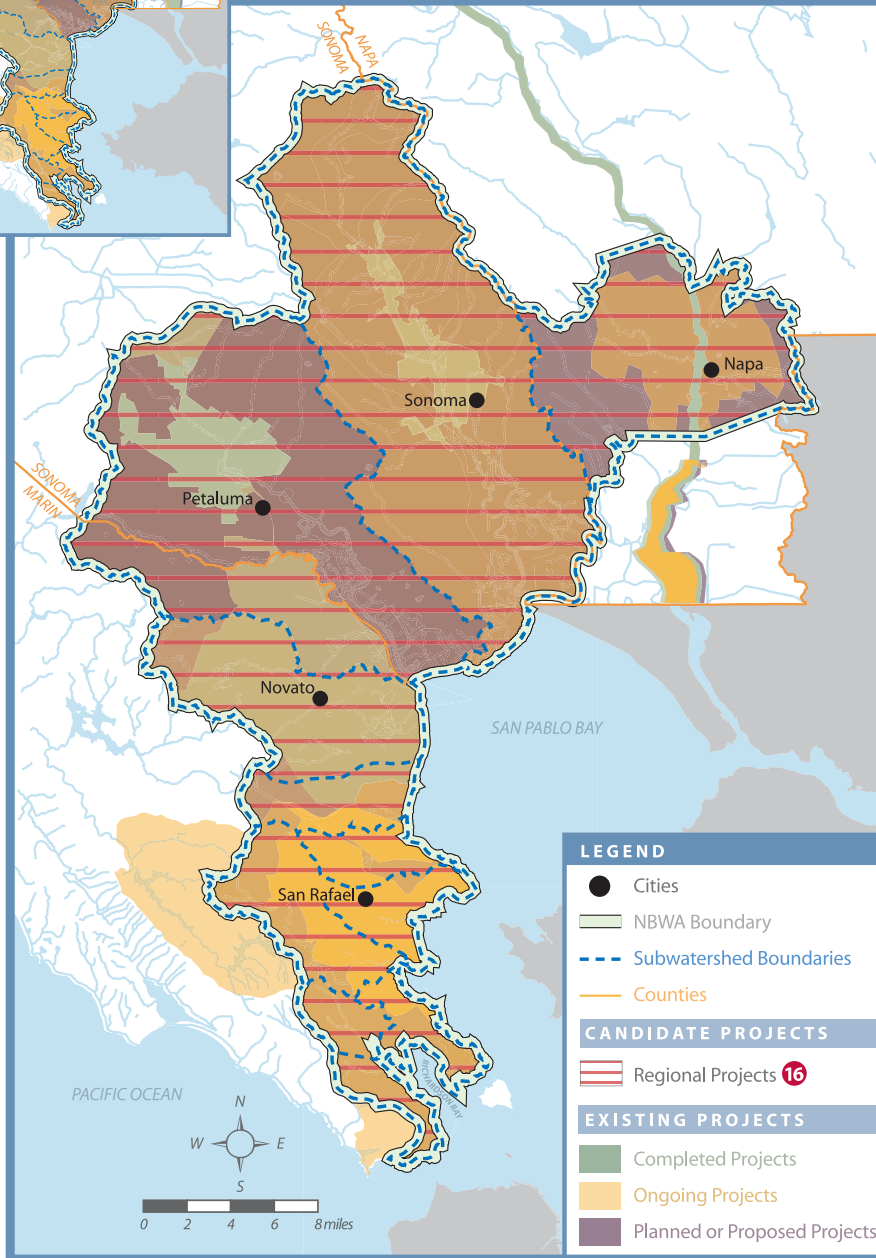
5.4 WATER QUALITY OBJECTIVES

EXISTING PROJECTS



WQ1: Support efforts to protect receiving waters from pollution to comply with current and future water quality regulations and maintain healthy aquatic systems.

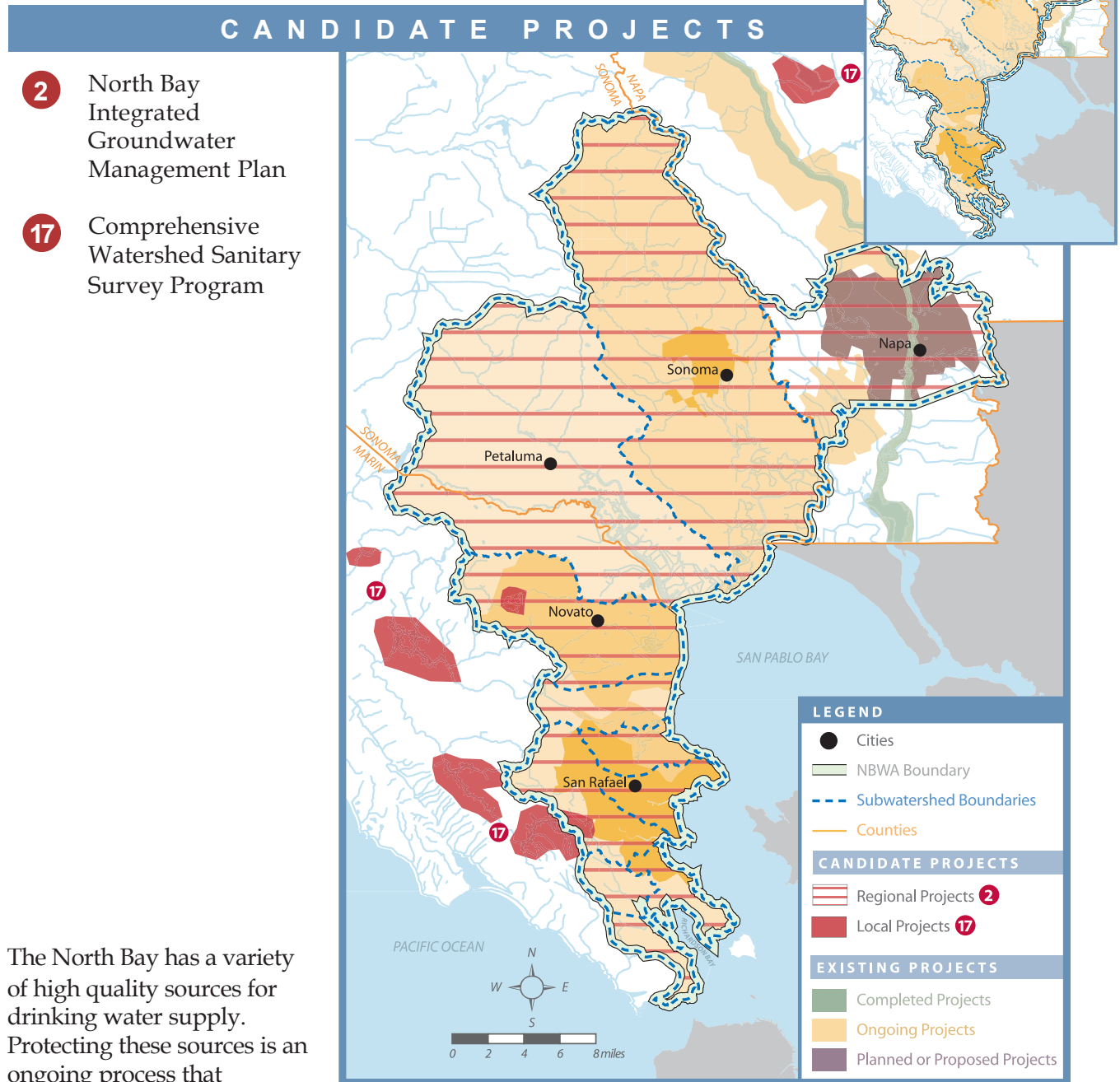
CANDIDATE PROJECTS



16 Forum on TMDL Collaboration

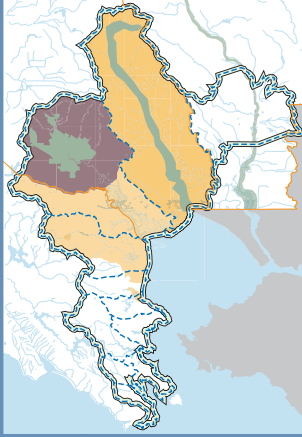
The San Pablo and San Francisco bays are the ultimate receiving waters for each of NBWA's subwatershed areas. TMDL activities being conducted for these receiving waters will serve as guides towards indicating potential issues as well as future regulations regarding activities such as discharging within the NBWA area. NBWA offers a unique opportunity to serve as forum for member agencies to become informed and engaged in ongoing or proposed TMDL activities as well to spear-head efforts for regional collaboration on TMDL issues.

WQ2: Support efforts to protect surface and groundwater supplies to enable compliance with all applicable drinking water regulations.



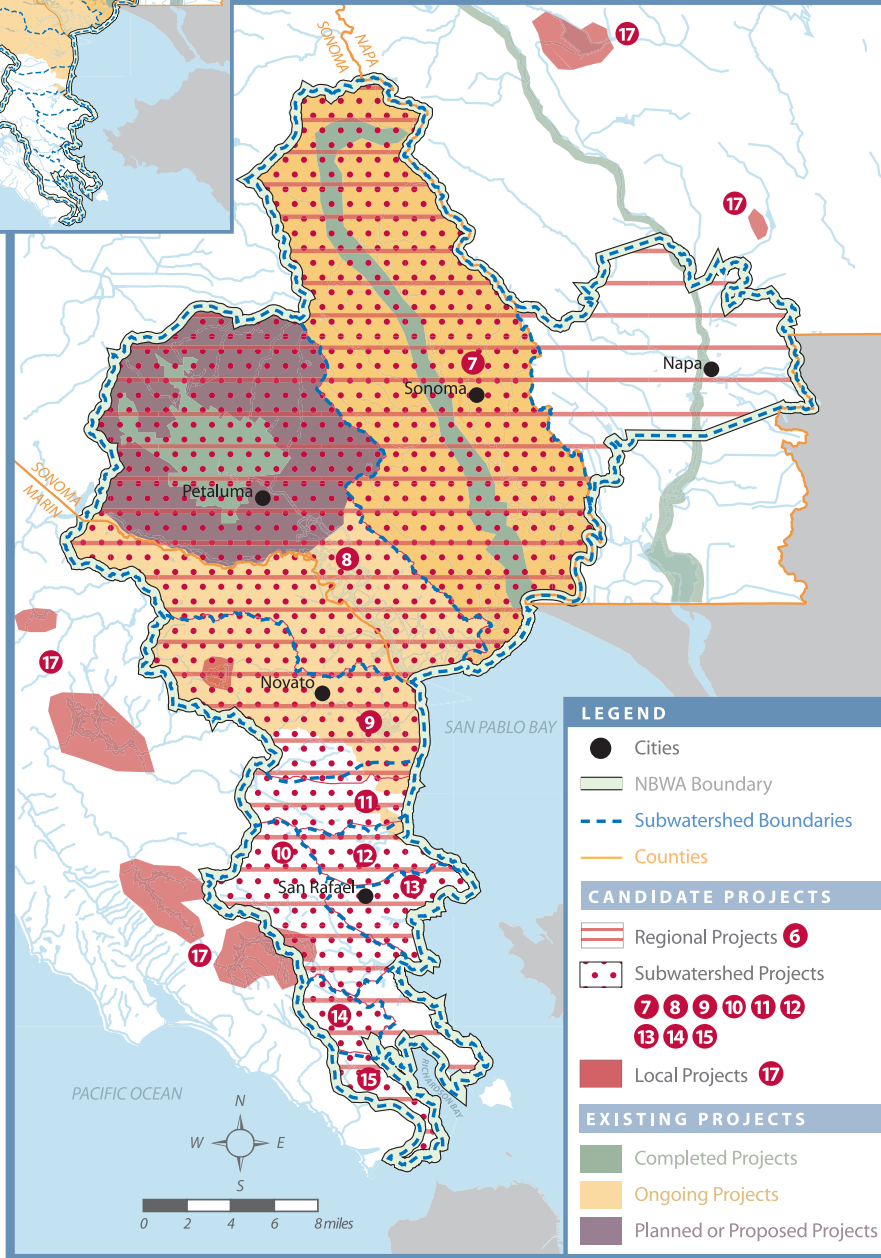
The North Bay has a variety of high quality sources for drinking water supply. Protecting these sources is an ongoing process that involves the management of watershed lands as well as the water bodies themselves. Creating an Integrated Ground Water Management Plan for the North Bay will highlight ways in which North Bay agencies can work together to protect the quality of groundwater supplies. A Comprehensive Watershed Sanitary Survey Program will also develop a collaborative procedure for performing the DHS required sanitary surveys of water supply sources in the North Bay. The program would serve to characterize watershed and water supply systems along with analyzing water quality data for NBWA members on a regional scale.

EXISTING PROJECTS



WQ3: Support coordination or collaborative efforts to monitor surface and groundwater quality to identify point and non-point source pollution sources.

CANDIDATE PROJECTS



- 6** Regional Stream Monitoring Program
- 7** Sonoma Creek Monitoring Project
- 8** Petaluma River Monitoring Project
- 9** Novato Creek Monitoring Project
- 10** Corte Madera Creek Monitoring Project
- 11** Miller Creek Monitoring Project
- 12** Gallinas Creek Monitoring Project
- 13** San Rafael Creek Monitoring Project
- 14** Arroyo Corte Madera del Presidio/Mill Valley Creek Monitoring Project
- 15** Sausalito Area Creeks Monitoring Project
- 17** Comprehensive Watershed Sanitary Survey Program

The watershed areas of the North Bay not only serve as drinking water supply sources but are also the backbone to a wide variety of natural environments and critical habitats. Protecting these surface and groundwater supplies from non-point pollution sources begins with strong and coordinated subwatershed assessment and stream monitoring programs. A Comprehensive NBWA Watershed Sanitary Survey Program would serve to identify point-source pollution issues in a congruent manner allowing for regional collaboration to develop the solutions needed to address these issues.