



From Seed to Sapling: The Evolution of Napa RCDD's Forest Health Program

Ali Blodorn, Ph.D.

Principal Program Manager, Forest Health



Road Map:

- **Forest Health Program | Focus & Background**
- **Looking Ahead | Strategic Priorities**
- **Program Spotlights:**
 - **County-Wide Forest & Habitat Health Strategy**
 - **Huichica Creek Restoration Project**



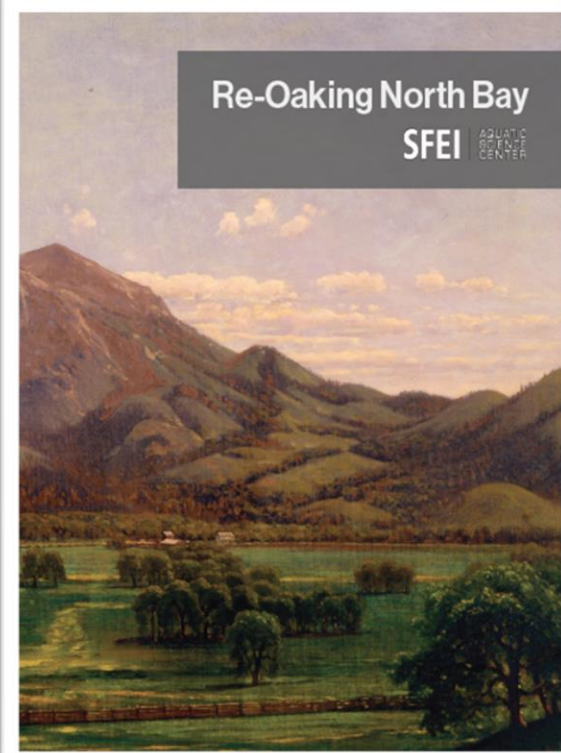
Technical & Financial Assistance



Collaboration & Coordination



Planning & Monitoring

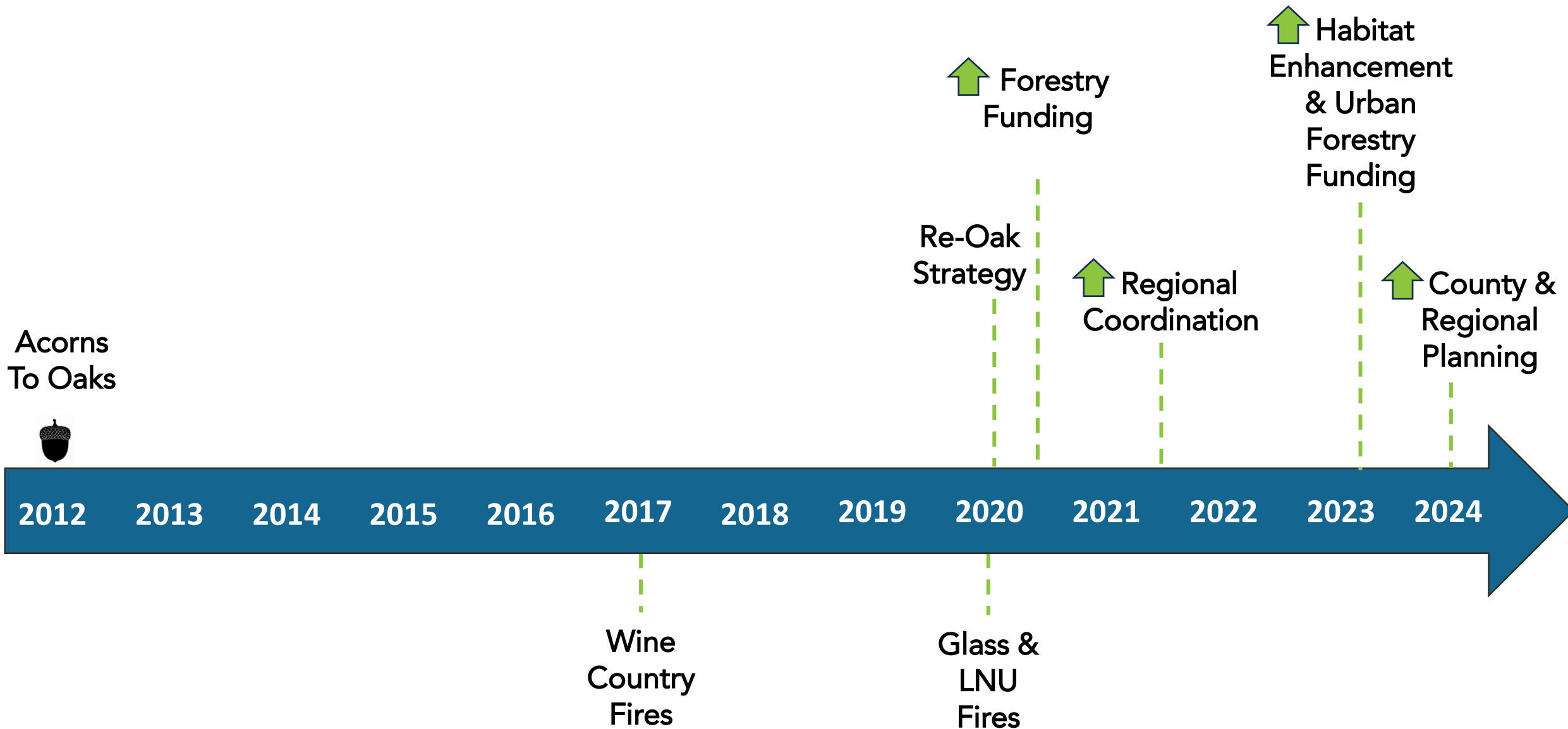


Community Engagement & Education





Forest Health Program | How We Got Here





Strategic Plan

2024 – 2029

Looking Ahead

Goal: Our forests are measurably healthier and more resilient to climate change, are actively stewarded by the community, and benefit all

5-Year Objectives:

- Increased pace and scale of forest health programming
- Implemented robust monitoring protocols to quantify reach and impact
- Support community and partners in increasing knowledge about BMPs and engaging in stewardship
- Defined and scaled habitat enhancement and restoration programming





Strategic Plan

2024 – 2029

Looking Ahead

Strategies to Achieve 5-Year Objectives:

- Engage diverse partners to develop a county-wide forest and habitat health strategy
- Implement on-the-ground activities that improve the health of forests and other key terrestrial ecosystems
- Shift the way that community members understand and connect to forests, empowering community-led stewardship





Program Spotlight:
**County-Wide Forest &
Habitat Health Strategy**



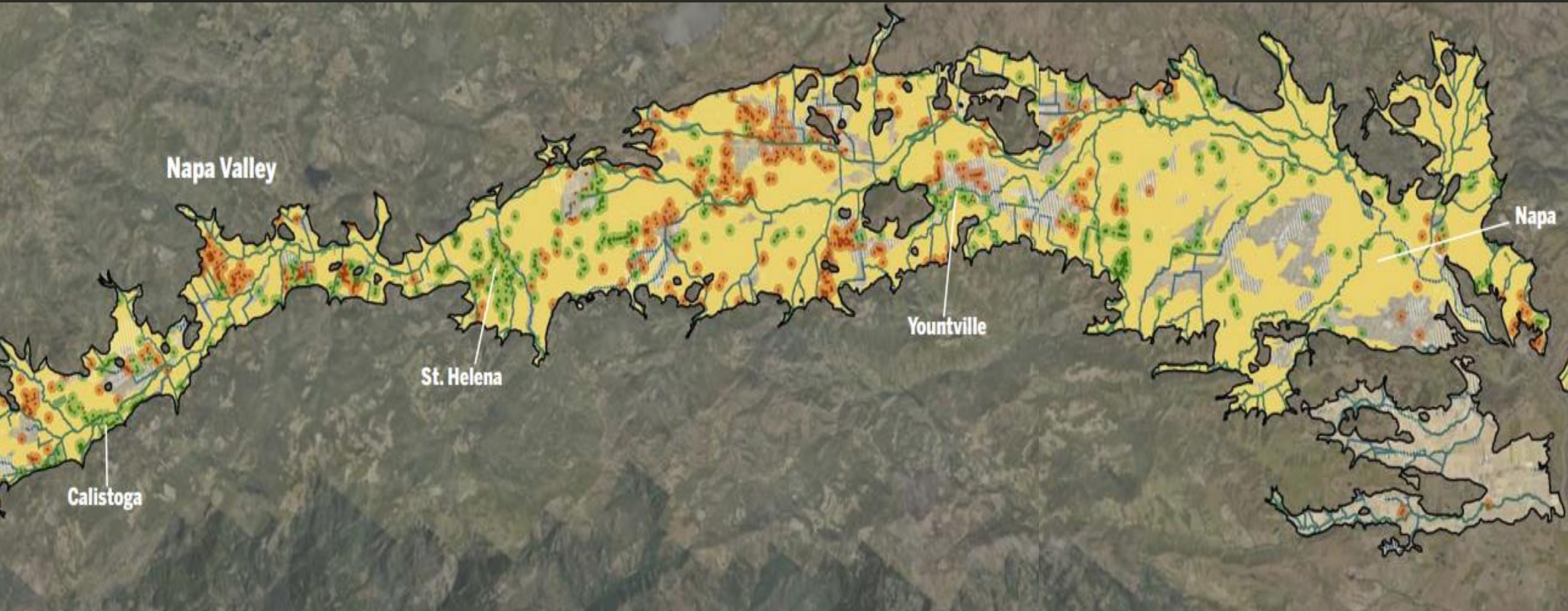
A close-up photograph of oak leaves and acorns. The leaves are green with some yellowing, and the acorns are dark brown. The background is a blurred natural setting.




Re-Oak North Bay is an initiative to restore our native oak communities in places where they could once again thrive and benefit our landscapes into the future




<https://naparcd.org/oaks/>

Re-Oak Re-Oaking Opportunity Areas



-  Lost Historical Oak Habitats (ca. 1850)
-  Areas of Significant Recent Oak Loss (1942-2005)
-  Areas with Existing Large Oaks

 Riparian Corridors



Going Beyond Oaks... Creating a Resilient Future

Common Questions:

- What is the current state of forest and habitat health? What (and where) are the biggest threats?
- How do we make informed management choices?
- How do we manage for our future climate?
- How do we know what impact we are having?



County-Wide Forest & Habitat Health Strategy

Goals

- Provide practical information on existing conditions and how to foster resilience through management choices
 - Overview of existing conditions, threats to ecosystem function & habitat value
 - Conservation strategy within ecosystem type, including best management practices
 - Identify key metrics that we can track over time (dashboard/scorecard)
- Update on a regular cadence to maintain relevance & utility



County-Wide Forest & Habitat Health Strategy

Users & Use Cases:

- **General public** → educational tool, multi-benefit approach to management
- **Napa RCD, conservation & resource organizations** → inform priority management areas and what management looks like
- **Landowners/land managers** → inform individual's management decisions
- **Policymakers** → inform planning, regulations, funding priorities





Program Spotlight:
Huichica Creek
Restoration Project





Huicicha Creek | Project Area

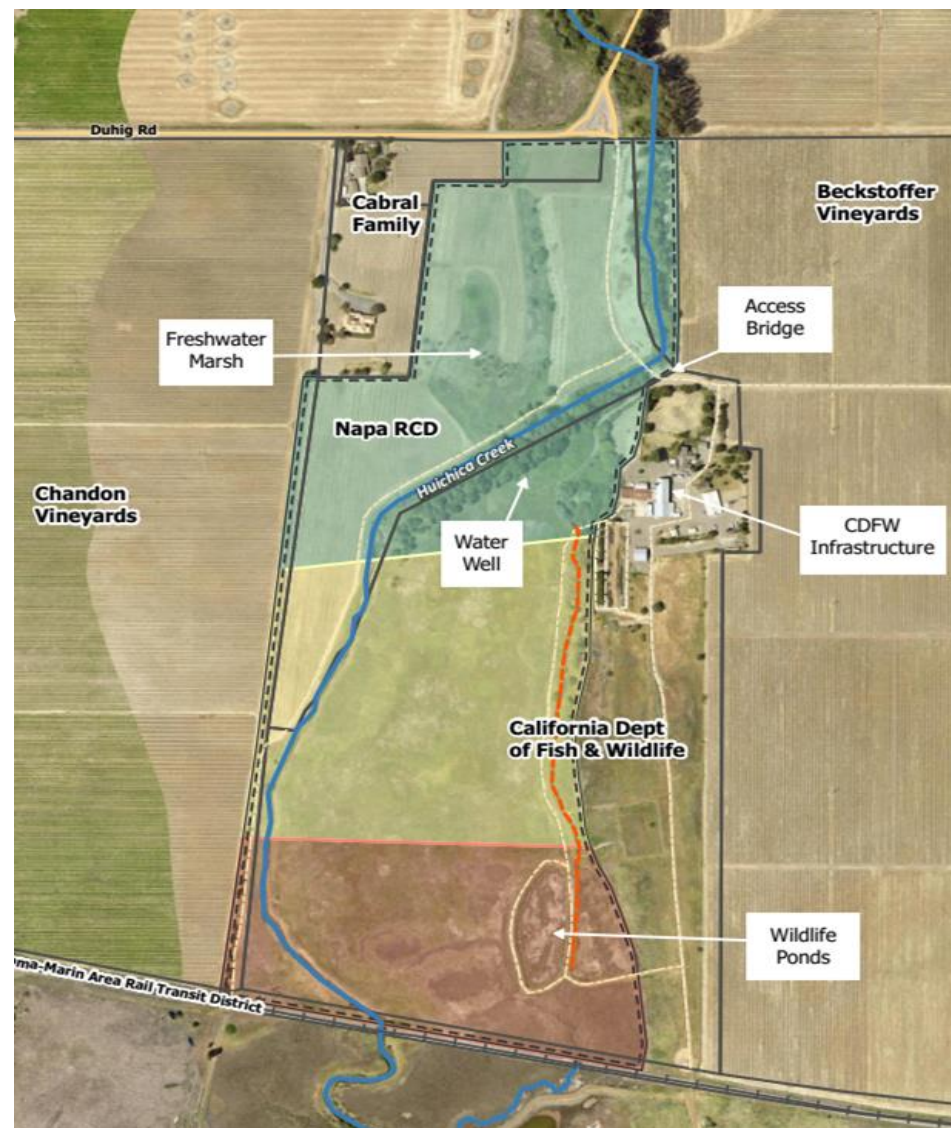
Total project area = 70 ac

Habitats to be restored:

- 28 ac of riparian & freshwater marsh
- 23 ac of estuarine
- 19 ac of tidal marsh

Property ownership:

- Napa RCD (public)
- CDFW (public)
- Beckstoffer Vineyards (private)
- Chandon (private)



Huicicha Creek | Restoration Planning



Huicicha Creek | Project Details

Habitat Restoration:

- Restores 70 acres of tidal marsh, estuarine habitat, freshwater marsh and riparian habitat
- Supports key species like Steelhead, California Black Rail, and Salt-Marsh Harvest Mouse

Flood Management & Climate Adaptation:

- Implements nature-based flood management in an area prone to flooding
- Enhances climate resilience with room for habitats to naturally shift in response to sea level rise

Public Access & Community Engagement:

- Creates opportunities for residents and students to participate in the restoration process
- Improves recreational, educational, and cultural access for surrounding communities



Looking Ahead | Other Highlights

- **Riparian Restoration** – managing invasives, restoring and connecting critical habitat
- **Intentional Fire** – building comfort and capacity putting fire on the land
- **Workforce Development** – upskilling current workforce, supporting future workforce





Questions?

Ali Blodorn, Ph.D.
Principal Program Manager, Forest Health
alison@naparcd.org
707-690-3115

