

Update on the Stormwater Trash Project



Provided to the North Bay Watershed
Association Board of Directors

December 2, 2016

Background

- New statewide trash amendments April 2015
 - State Board - apply to NB NPDES permits by 2018 (Phase II)
 - Two tracks: 1) full trash capture 2) “equivalent” actions
 - Trash Reduction Plans by mid-2018
-
- Bay Area Stormwater agencies {BASMAA} leading effort
Phase II Committee Trash Amendments Planning Project; Consultant EOA

Total cost \$162K

NBWA funding: \$30,293 –Task 1 and Task 2.2

Trash Sources and Pathways to Urban Creeks

VEHICLES

Litter from moving vehicles

Dispersal of trash from uncovered vehicles

Downstream transport

Litter from parked vehicles

INADEQUATE WASTE CONTAINER MANAGEMENT

Overflowing or uncovered receptacles and dumpsters

Dispersal of household trash and recycling materials before, during and after collection

ILLEGAL DUMPING

In-creek disposal

Illegal dumping of trash and debris on land or in creek

Illegal encampments

Wind

High traffic areas near businesses

PEDESTRIAN LITTER

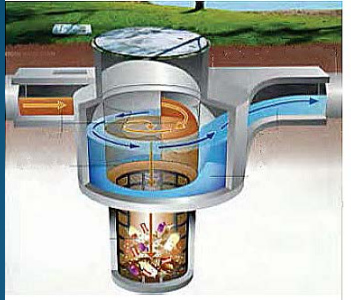
Special events with high volumes of people

Transition areas where food/drinks are not permitted

Storm drains

Full Trash Capture Systems





Photos: epa.gov

+



Certified or Approved Full Capture Systems

+

Ongoing O&M



Other Trash Controls

+

On Land Visual Assessments & BMP Performance Standards



=

Low Trash Generation & Full Capture Equivalency

NBWA-Funded Deliverables

Task 1: Compliance Memo & Meetings with permittees
Draft Trash Reduction Framework/“equivalency” Memo
Review with permittees; complete final Framework
IN PROGRESS

Task 2.2 Technical Memo- Guidance on how to revise
baseline trash generation maps locally [key to
compliance] - **COMPLETE**

Project Update

- State Water Board developing compliance guidance
- State Water Board will direct municipalities to begin complying through an Order
 - Timeline continues changing
 - Now likely in Spring 2017
- Our project timeline extended
 - Better to wait for guidance from state
 - Our early planning and products is informing statewide guidance

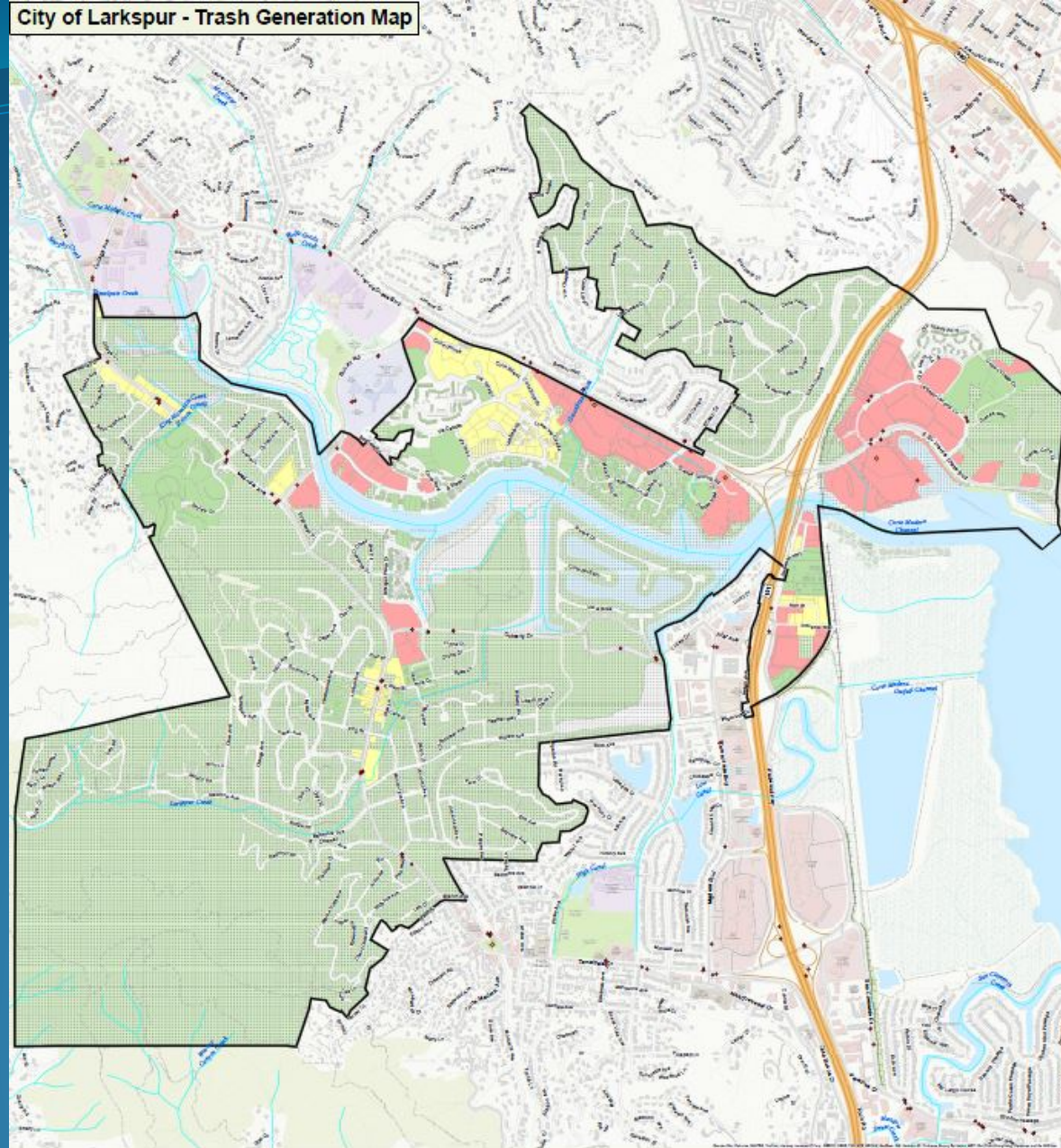
Project Deliverables and Current Timeline

- “Compliance Roadmap” Technical Memo (Memo#1)
 - Draft received and comments returned to consultant
 - Final memo in January 2017
- Meetings w/ staff to discuss compliance road map
 - Were held in Napa and in Novato on Summer 2016
- Guidance on revising baseline trash generation maps (Memo #3)
 - Received in November 2016
 - Baseline map revisions completed and returned to EOA

Project Deliverables and Current Timeline

- Full Capture Equivalency Approach Technical Memo (#2)
 - Draft Expected in January 2017
- Meeting with Regional and State Water Board
 - Expected in early 2017
- Finalize Memo #2 (Equivalency Memo)
 - Expected mid 2017

City of Larkspur - Trash Generation Map



Legend
Trash Generation Category
 Low
 Moderate
 High
 Very High

• Park and Ride Lot
 • Bus Stop
 Non-Priority Land Use
 (Generation Rates are Faded)

Street
 Freeway
 Creek
 Parcel Boundary
 Permit Fee Boundary



Data Sources:
 Roads: Main County
 City Boundaries: Main County
 Parcels: Main County
 Land Use: Main County
 Background: ESRI World Topographic Map

Map Created By:
 SOA, Inc.
Date:
 October 14, 2016

Visual On-land Trash Assessment Protocol for Stormwater

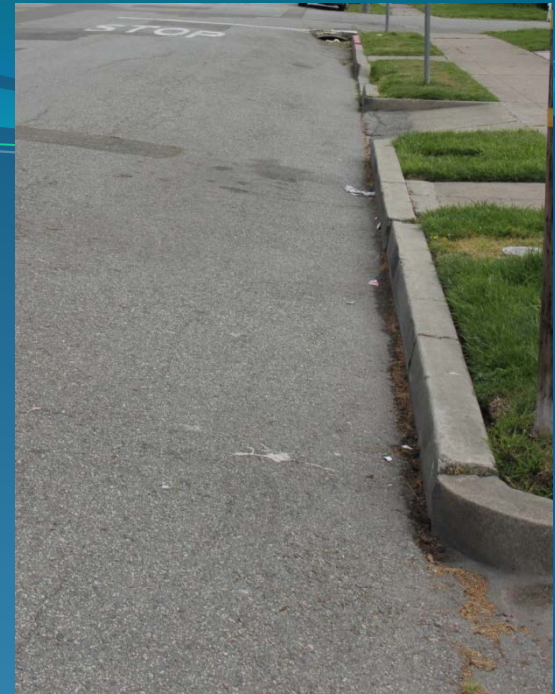
Version 1.3

Trash Condition Category	Definition
A Not Littered	<ul style="list-style-type: none">• Effectively no trash is observed in the assessment area.• Approximately less than one piece per two car lengths on average• There may be some small pieces in the area, but they are not obvious at first glance• One individual could easily clean up all trash observed in a very short timeframe.
B Slightly Littered	<ul style="list-style-type: none">• Predominantly free of trash except for a few littered areas.• On average, one piece per two car lengths• The trash could be collected by one or two individuals in a short period of time.
C Littered	<ul style="list-style-type: none">• Predominantly littered except for a few clean areas.• Trash is widely/evenly distributed and/or small accumulations are visible on the street, sidewalks, or inlets.• At least two or three pieces per car length on average• It would take a more organized effort to remove all trash from the area.
D Very Littered	<ul style="list-style-type: none">• Trash is continuously seen throughout the assessment area,• Large piles and a strong impression of lack of concern for litter in the area.• There is often significant litter along gutters.• It would take a large number of people during an organized effort to remove all trash from the area.

A = Low



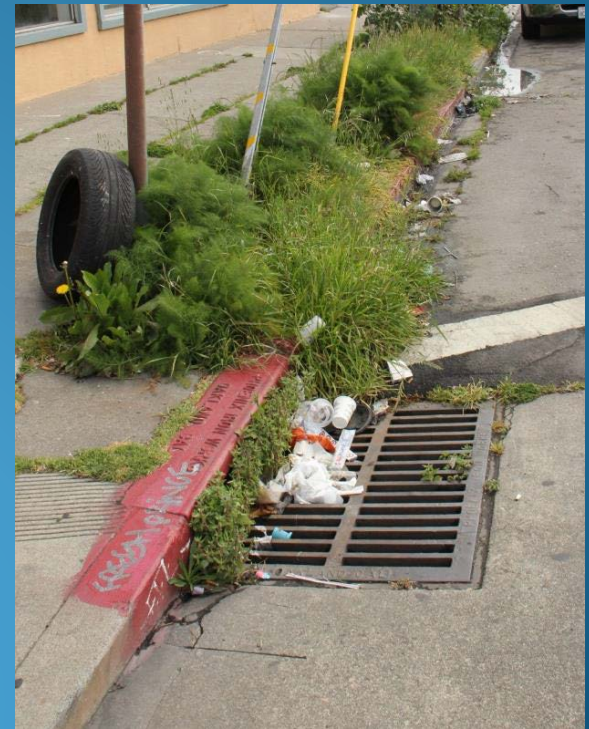
B = Moderate

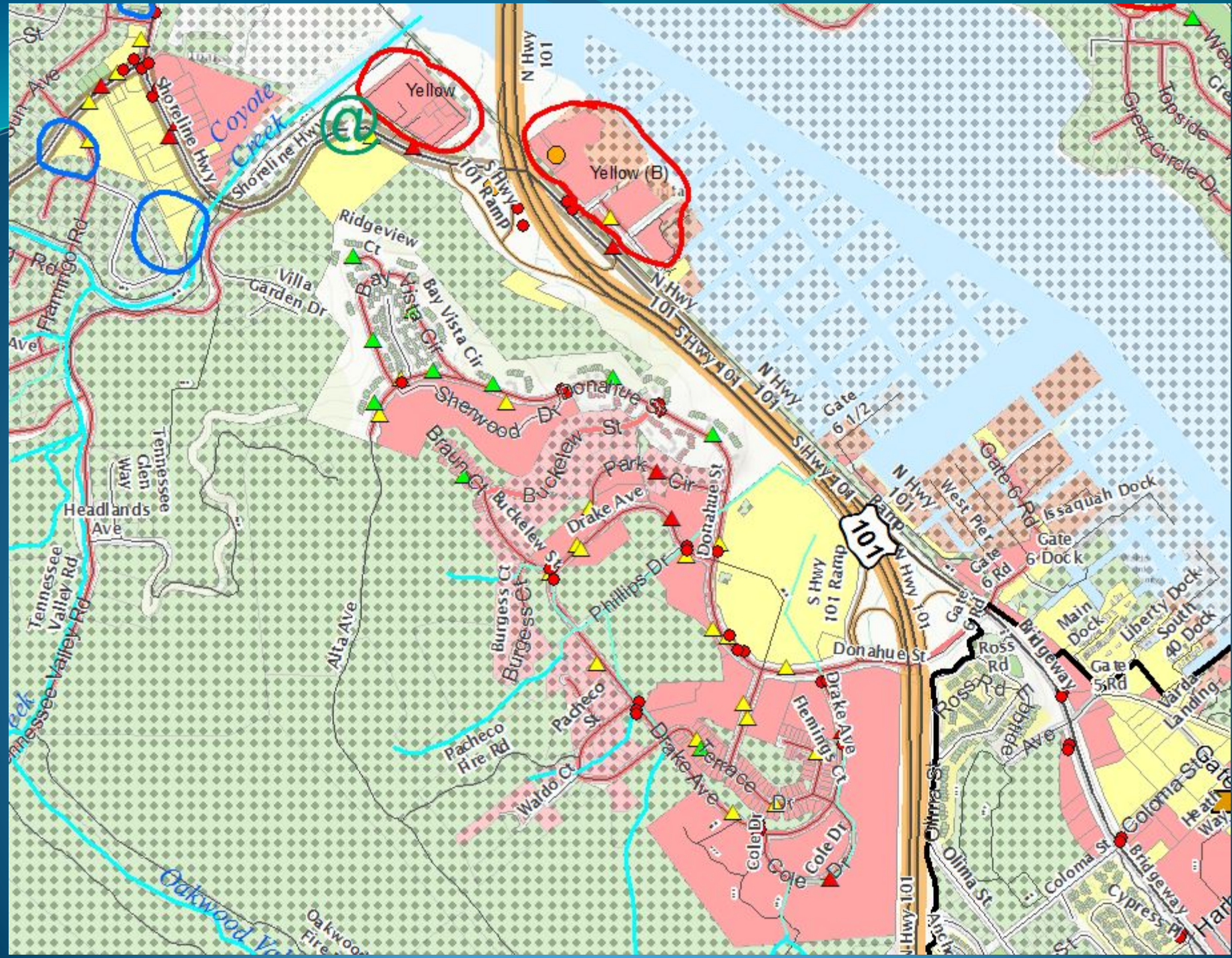


C = High



D = Very High

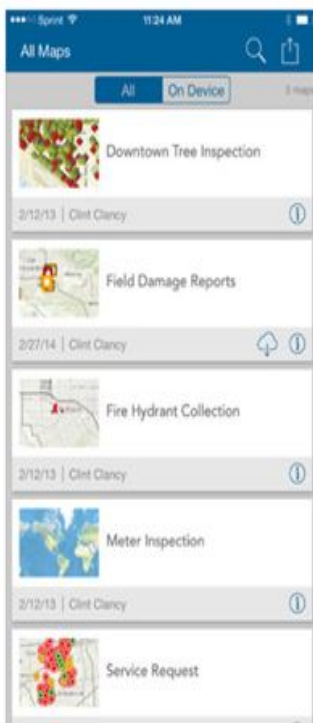






Collector for ArcGIS
ESRI

+ OPEN



Next Steps

- Obtain approval from Water Board of “equivalency” approach
- Continue to refine baseline trash maps
- Develop Trash Control Implementation Plans

Thanks

Partial Funding Support:

North Bay Watershed Association (NBWA)



Collaborative Partners:

Bay Area Stormwater Management Agencies Association (BASMAA)

MCSTOPPP – Marin County Stormwater Pollution Prevention Program

Napa Countywide Stormwater Pollution Prevention Program (NCSPPP)

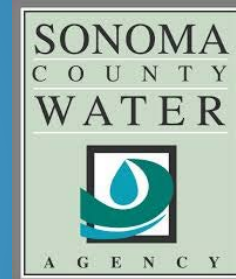
City of Petaluma

City of Sonoma

Sonoma County

Sonoma County Water Agency

City of Benicia



Questions?



Photo: Partial trash capture device Richard James, Coastodian.org