



Friends of the Petaluma River



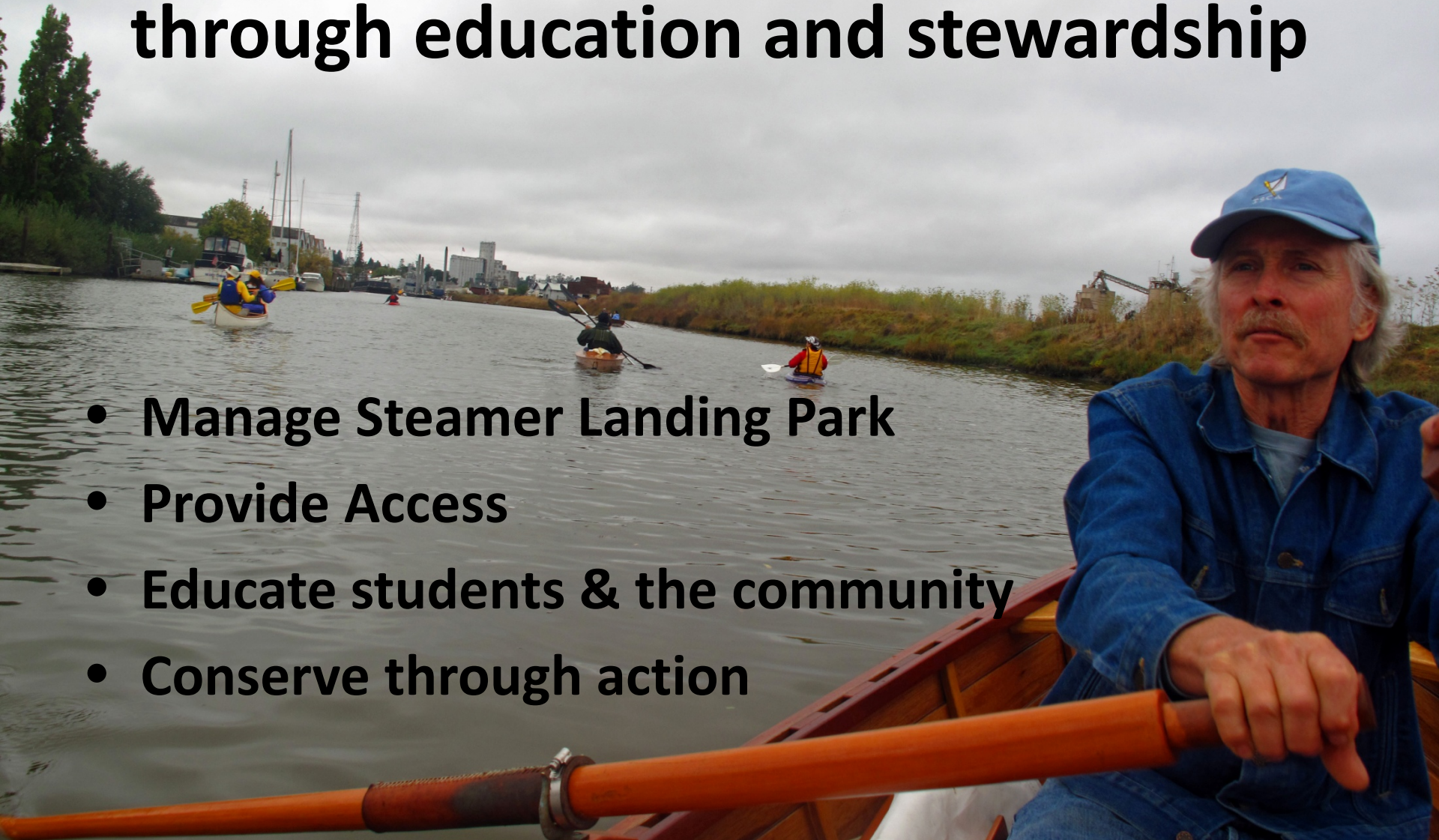
**FRIENDS OF THE
PETALUMA RIVER**



Watershed Classroom

FOPR: Celebrating the Petaluma River through education and stewardship

- **Manage Steamer Landing Park**
- **Provide Access**
- **Educate students & the community**
- **Conserve through action**









Watershed Classroom Mission Statement:

To support the implementation of exceptionally engaging curriculum about the Petaluma River and Watershed to educate youth in Petaluma about

- their place in our environment
- how their decisions and actions affect their environment
- inspire conservation and celebration of the Petaluma Watershed

Guiding Principal:

Friends of the Petaluma River believes that educators are our community's most important resource. By teaching Petaluma's youth, our teachers are guiding future generations of Petalumans whose decisions will determine the health and vitality of our wetlands and other natural resources.



Curriculum Requirements:

- integrated academic disciplines
- Project-based
- geoliteracy skills
- fieldwork activities
- hands-on learning activities
- CA Common Core Standards & Next Generation Science Standards



Watershed Classroom Website

A hub for information and communications about the Watershed Classroom & the Petaluma Watershed

- Curriculum content from teachers – assignments, lesson plans, student work
- Student projects, photos and testimonials
- Links to resources and information about the Petaluma Watershed
- <https://www.watershedclassroom.org>



Welcome to the Watershed Classroom

The Watershed Classroom supports the implementation of exceptionally engaging curriculum about the Petaluma River and Watershed to educate youth in Petaluma about their place in our environment, how their decisions and actions affect their environment and inspire youth to conserve and celebrate the Petaluma Watershed.



FROM THE CLASSROOM



The Petaluma Adobe Ranch
A MONTH AGO

SUPPORT US

DONATE

GET UPDATES FROM US!

Email Address *

SUBMIT

The Watershed



The Petaluma Watershed encompasses over 300 square miles and is home to the largest remaining salt marsh in California. Our resources will take you on a virtual tour where you can explore the Watershed for yourself.

The Curriculum



Our teachers have put together an amazing year of lessons based on the Petaluma Watershed. From high school to elementary school and from art to science, the curriculum incorporates a wide array of academic disciplines, outdoor education and project-based learning.

Our Partners



We work with partners throughout our local community to bring the resources and experts teachers and students need to learn about the Petaluma Watershed firsthand. Our partners work with teachers to develop their curriculum and support implementation in the classroom and in

Petaluma Watershed Atlas

← → ↺ www.watershedclassroom.org/watershed-atlas/ ★

[APPLY](#) [HOME](#) [ABOUT](#) [THE WATERSHED](#) [EDUCATOR RESOURCES](#) [CURRENT PROJECTS](#) [OUR PARTNERS](#) [CONTACT](#) [FROM THE CLASSROOM](#)

















[Sponsor Agencies](#) ▾

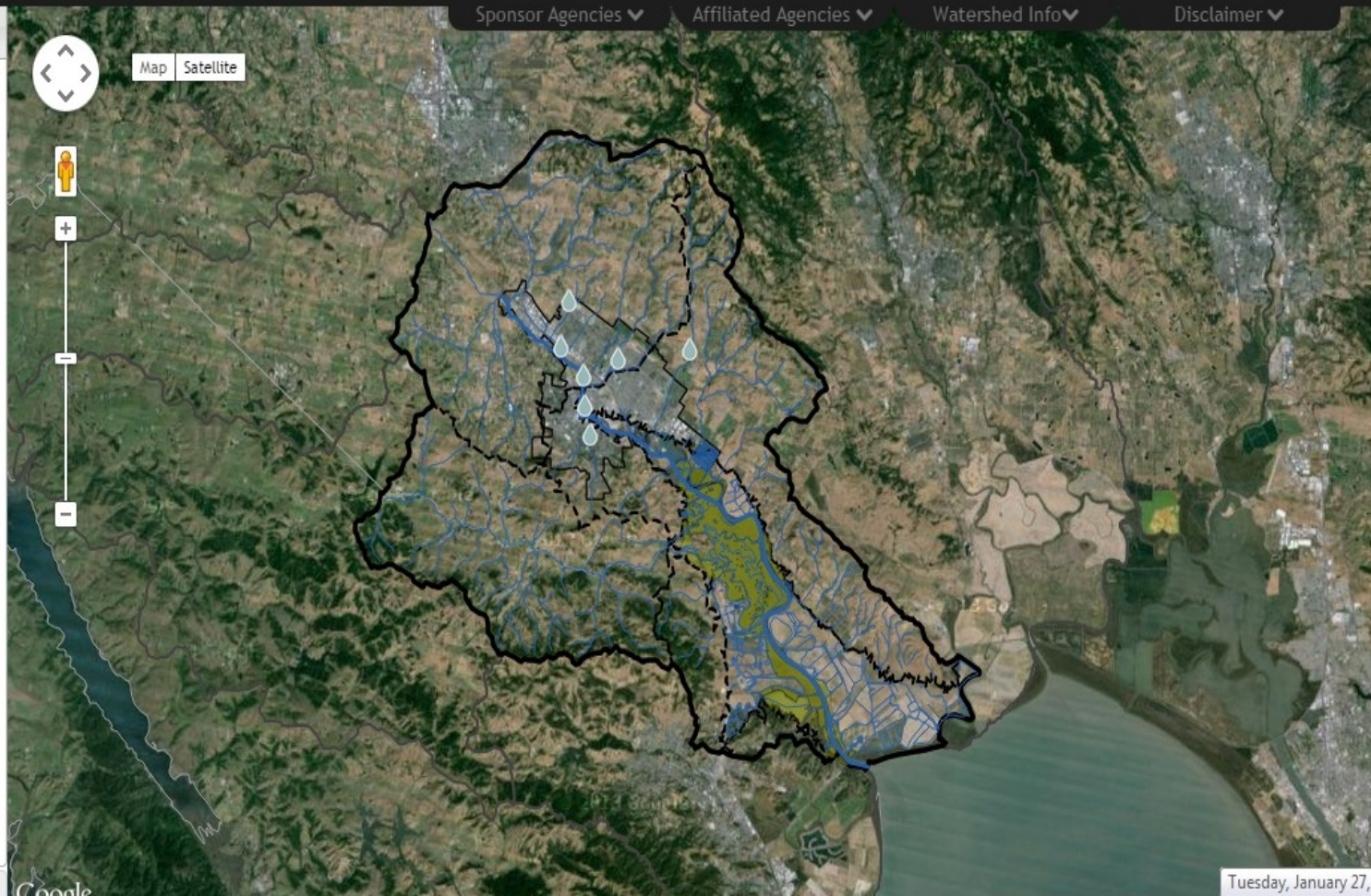
[Affiliated Agencies](#) ▾

[Watershed Info](#) ▾

[Disclaimer](#) ▾

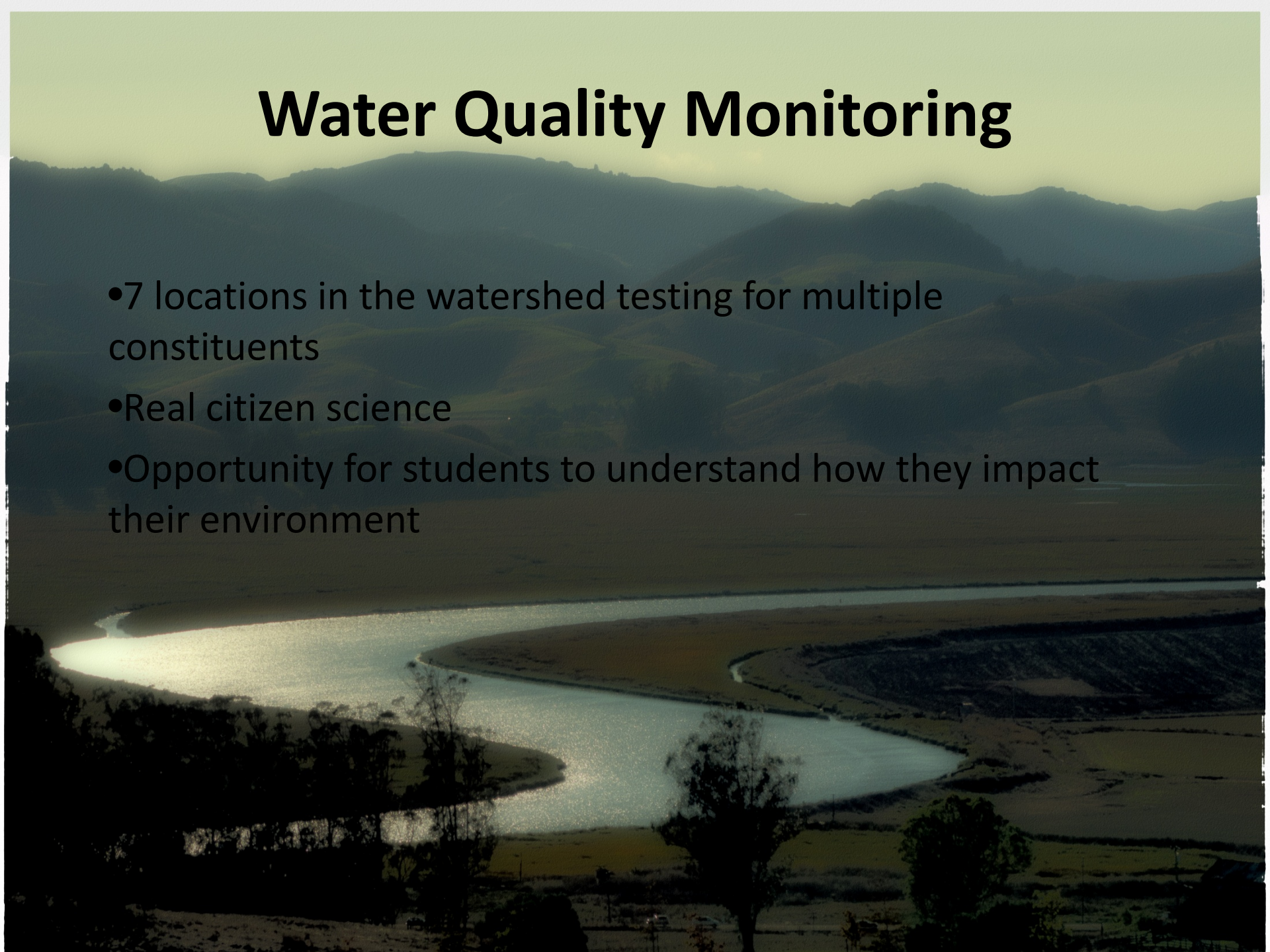
Layers

- ☒  Monitoring Location
- ☐  Stream or Rain Gauge
- ☐  SF Bay Area Water Trail Site
- ☐  School
- ☒  Petaluma River
- ☒  Creek
- ☒  Water Body
- ☒  Marsh
- ☐  Flood Zone
- ☐  Protected Open Space
- ☐  Geology
- ☒  Subwatershed
- ☒  Petaluma Watershed
- ☒  Neighboring Watershed
- ☒  City Limit
- ☒  County
- ☐ Show/hide all

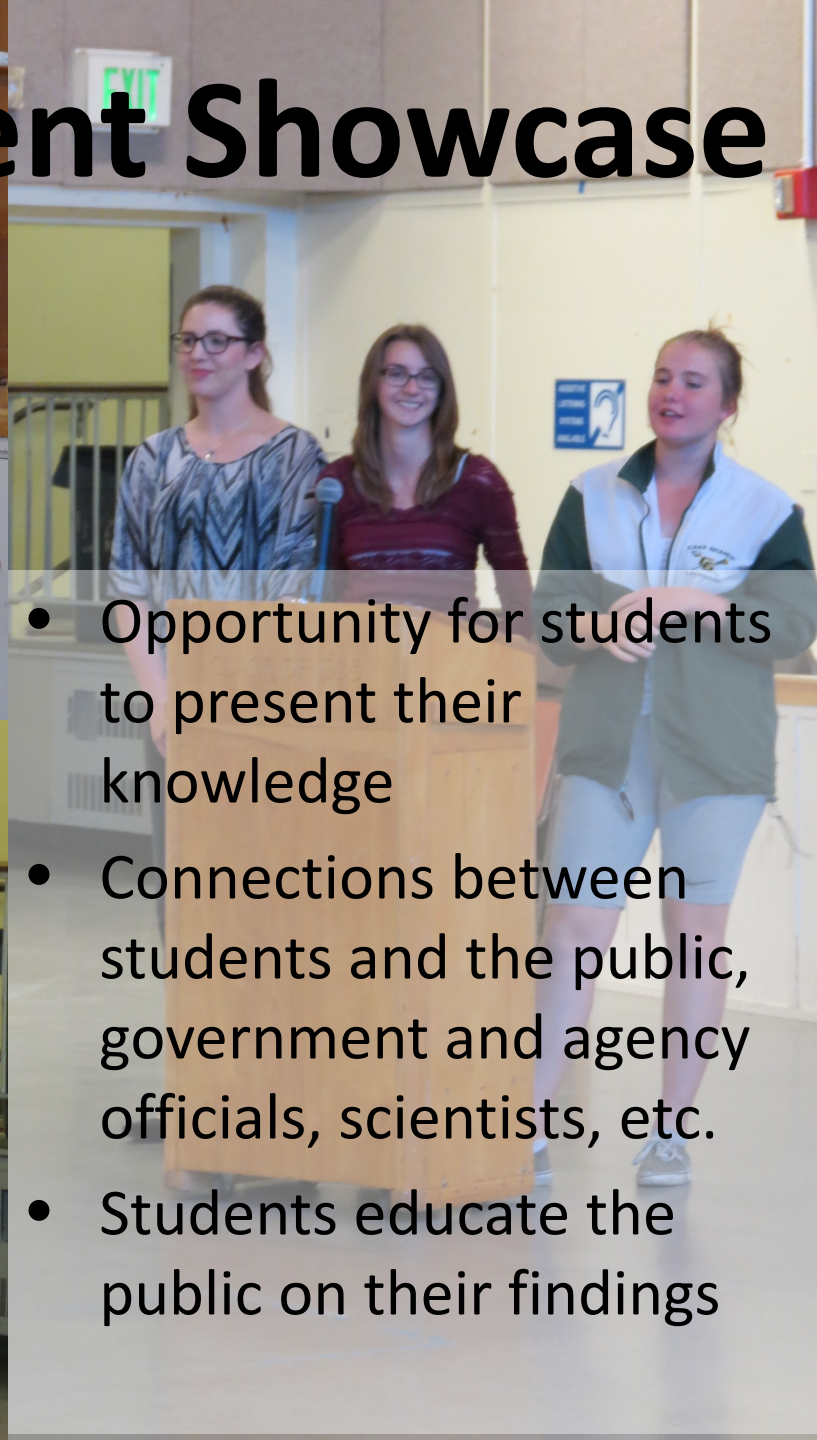


Water Quality Monitoring

- 7 locations in the watershed testing for multiple constituents
- Real citizen science
- Opportunity for students to understand how they impact their environment



Student Showcase



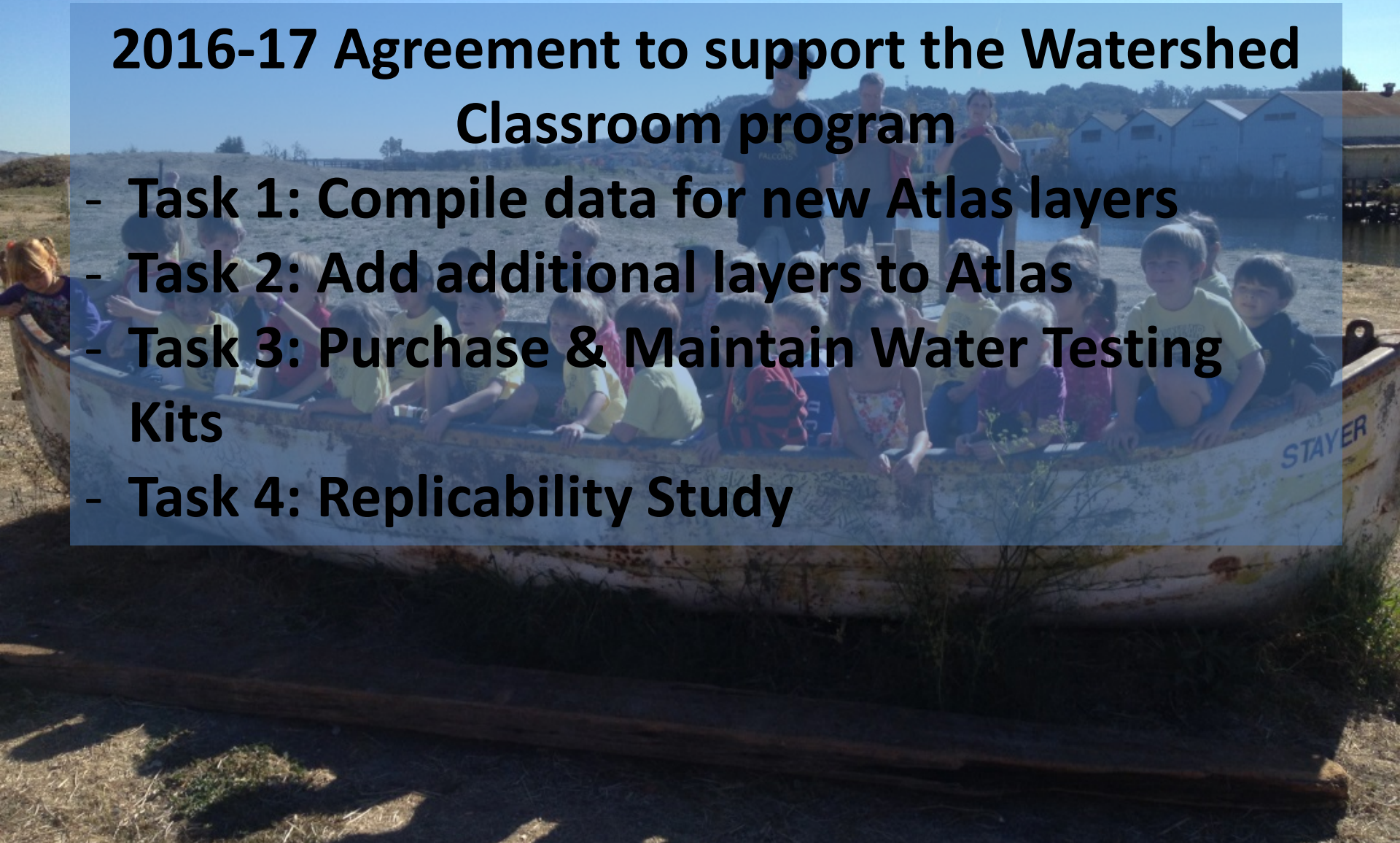
- Opportunity for students to present their knowledge
- Connections between students and the public, government and agency officials, scientists, etc.
- Students educate the public on their findings



NBWA & the Watershed Classroom

2016-17 Agreement to support the Watershed Classroom program

- Task 1: Compile data for new Atlas layers
- Task 2: Add additional layers to Atlas
- Task 3: Purchase & Maintain Water Testing Kits
- Task 4: Replicability Study



Task 1: Watershed Atlas Updates

- Water Testing data updates
- Storm Water input and output points
- River Cleanup locations
- Habitat areas and wildlife corridors
- Sea level rise



Task 2: Embed Atlas Layers

- Working with West Yost Assoc.**
- Atlas platform is being updated**
 - greater security and capacity**
- Full update to be completed by early spring**

TASK 3: WATER QUALITY MONITORING KITS

- Overhaul of kits to reflect field work needs
- Purchased testing supplies to outfit 14 kits
- Providing training for teachers on collecting, sampling and recording data
- Compiling qualitative data

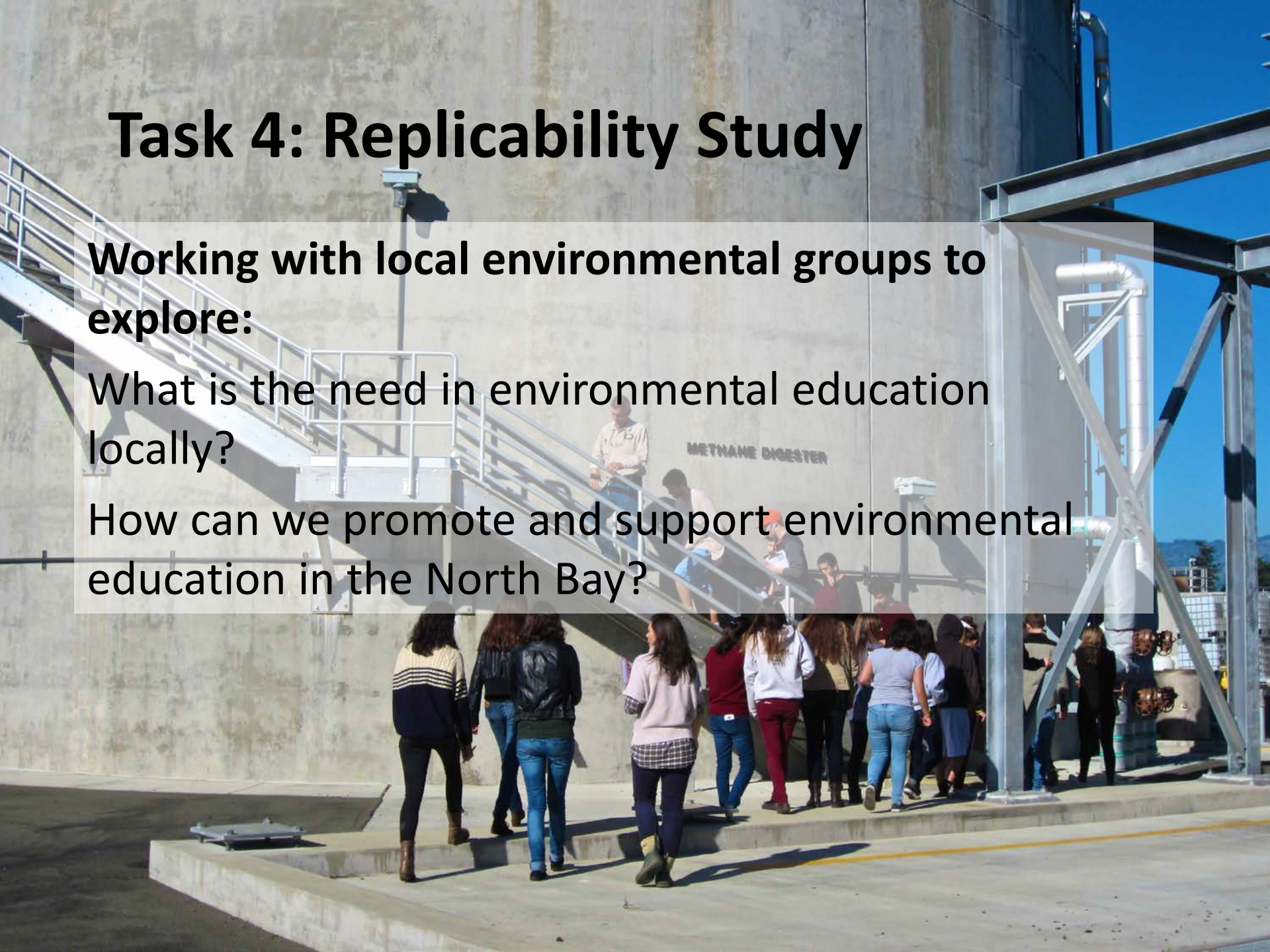


Task 4: Replicability Study

Working with local environmental groups to explore:

What is the need in environmental education locally?

How can we promote and support environmental education in the North Bay?



Forum For Watershed Collaboration

A group of people are seated in a circle in a rustic, wooden room, likely a barn or workshop. They are listening to a speaker who is standing on the right side of the frame, leaning on a cane. The room has large windows and wooden beams. The text is overlaid on the image in a semi-transparent box.

Avenue for collaboration between local, regional, state and federal agencies involved in natural resources management, public education, infrastructure, sciences, health, transportation and more.



QUESTIONS?????