

Russian River Fisheries Monitoring and Restoration Update

May 5, 2017

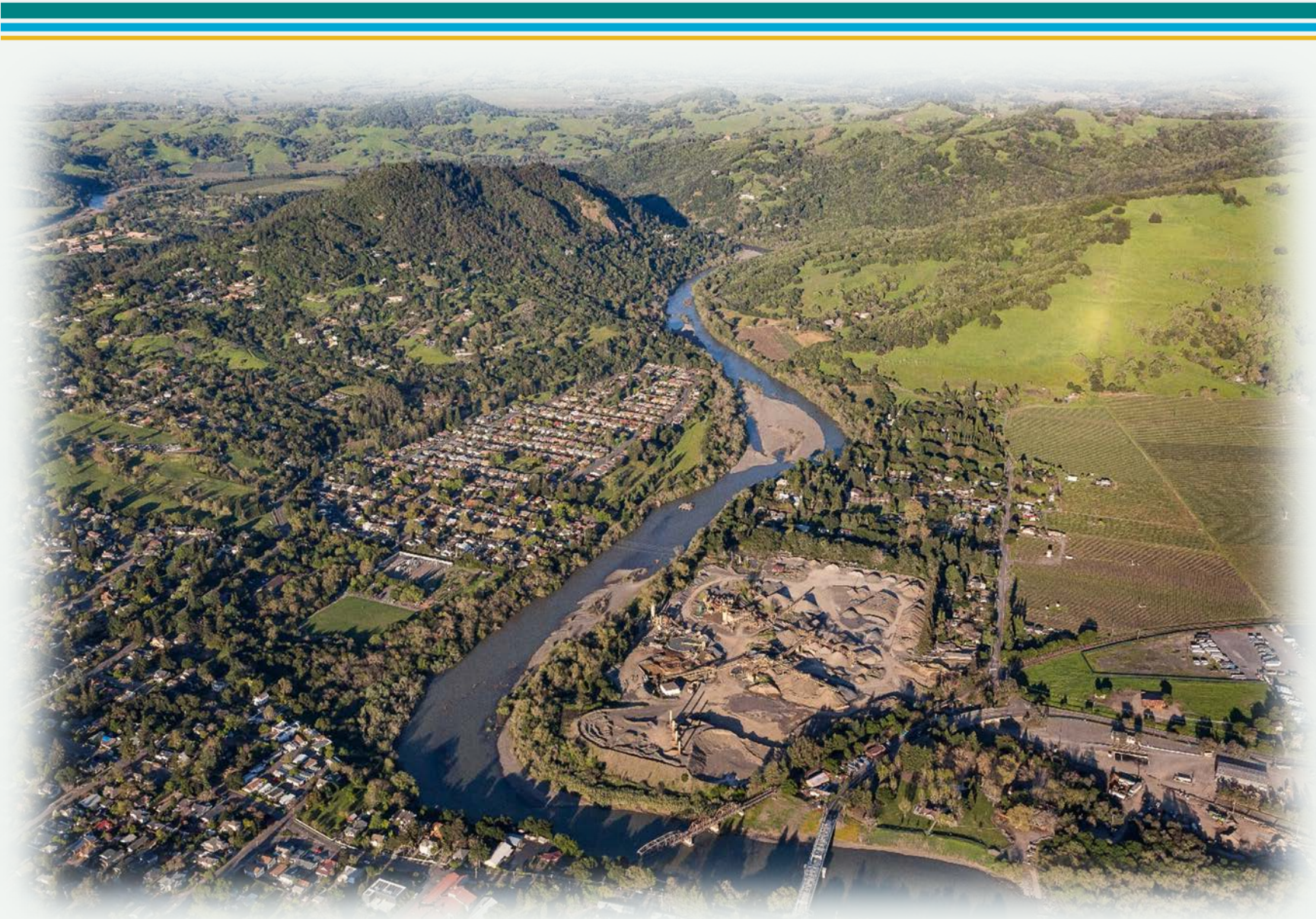
David Manning

Environmental Resources Manager

David.Manning@scwa.ca.gov

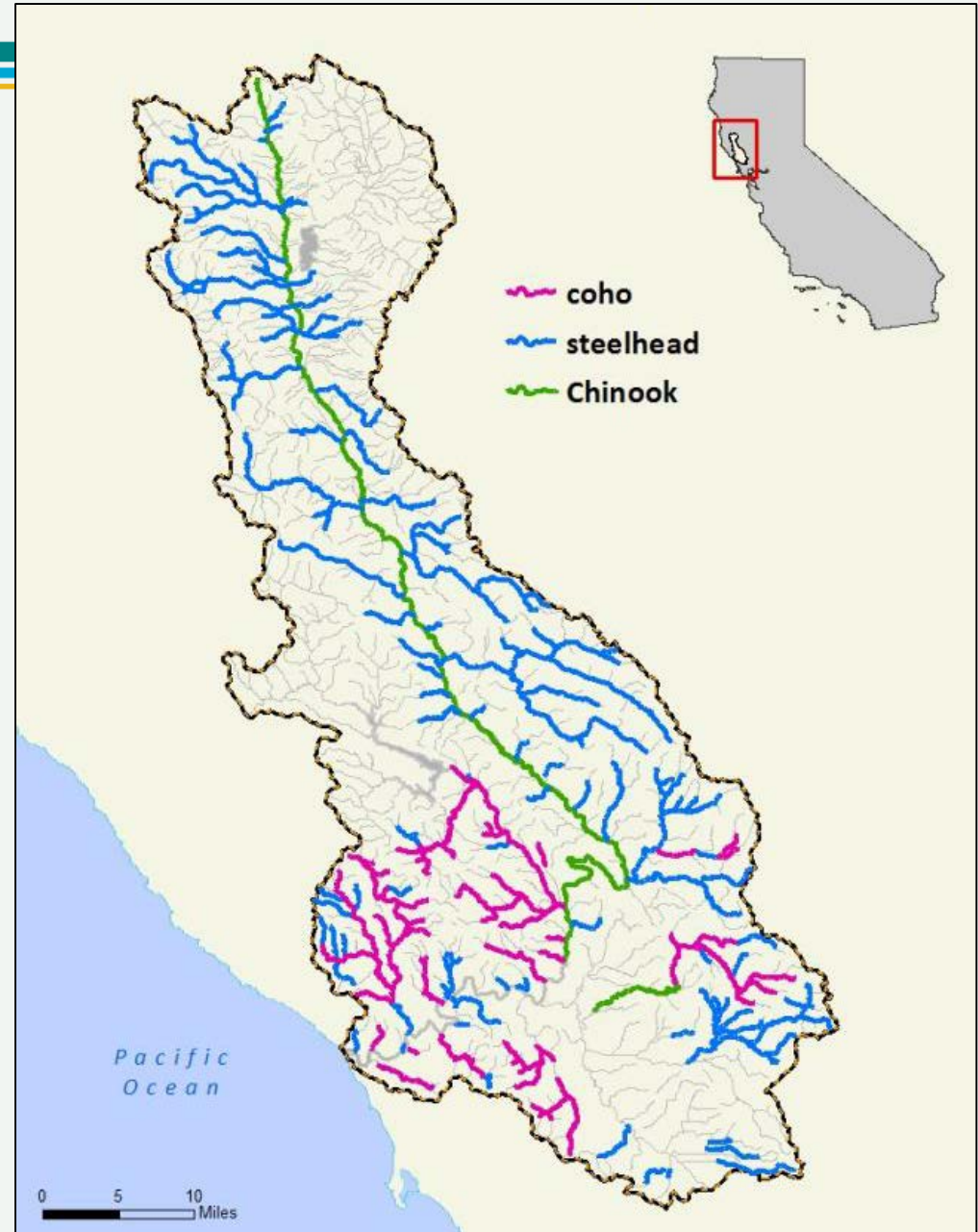


How Are Fish Doing In The Russian?



Russian River Salmon and Steelhead

- Coho salmon in 30 streams, 247 miles
- Steelhead in 159 streams, 901 miles
- Chinook in mainstem and 4 tributaries, 112 miles



Fish Sampling Sites

Chinook

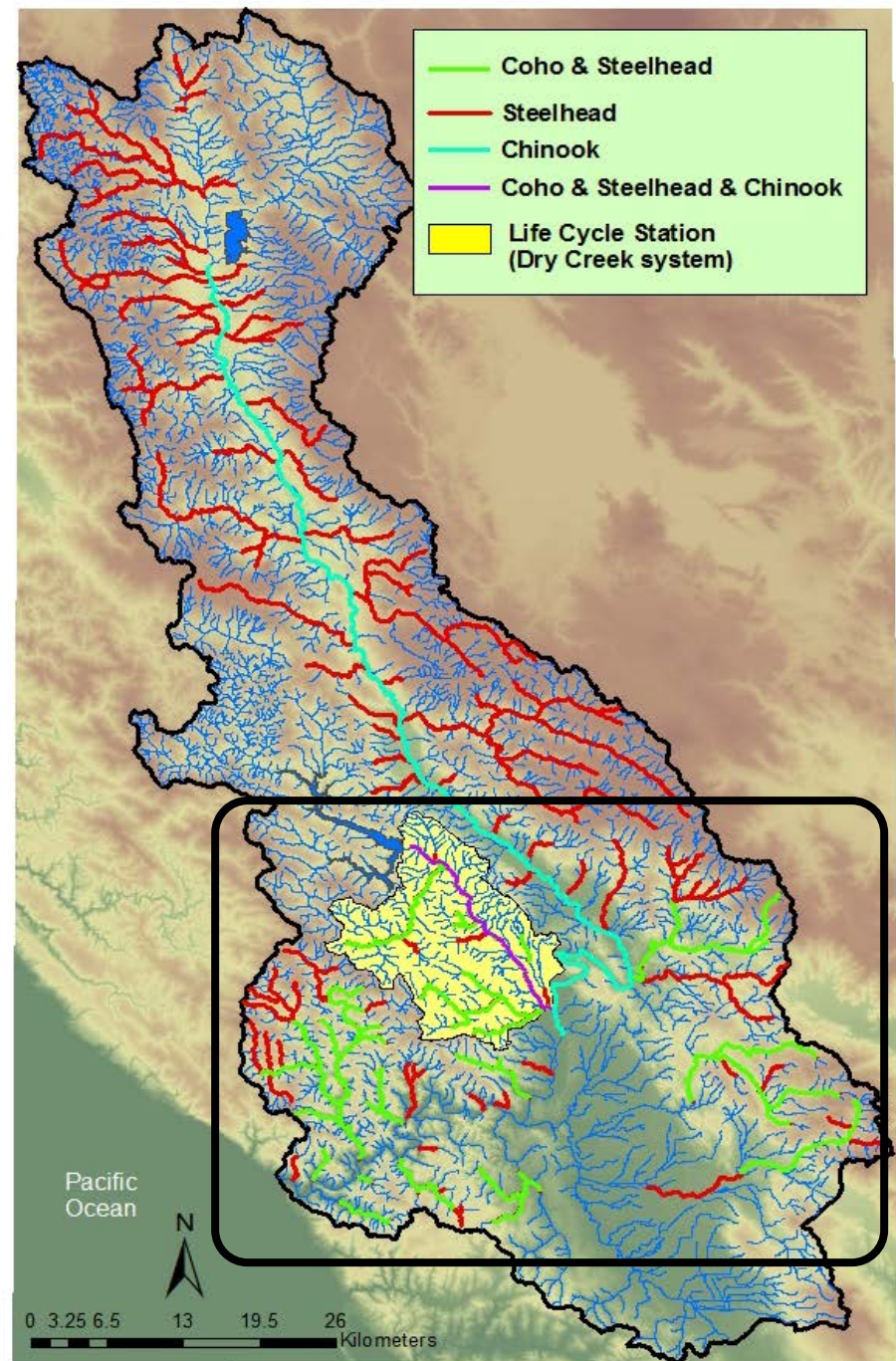
96 Reaches

Coho (+Steelhead)

118 Reaches

Steelhead Only

~230 Reaches



Native Warm Water Fishes



Russian River Fish Community

17 NATIVE SPECIES

—1 EXTIRPATED

2 “INFREQUENT VISITORS”

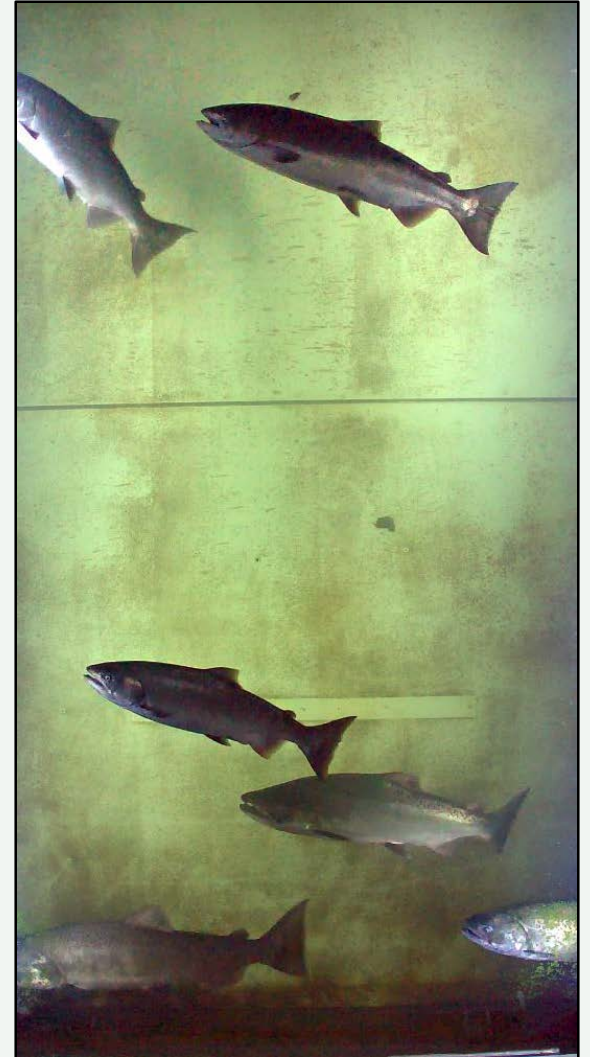
21 NON-NATIVE

TOTAL OF 37 SPECIES REPRODUCING IN
WATERSHED

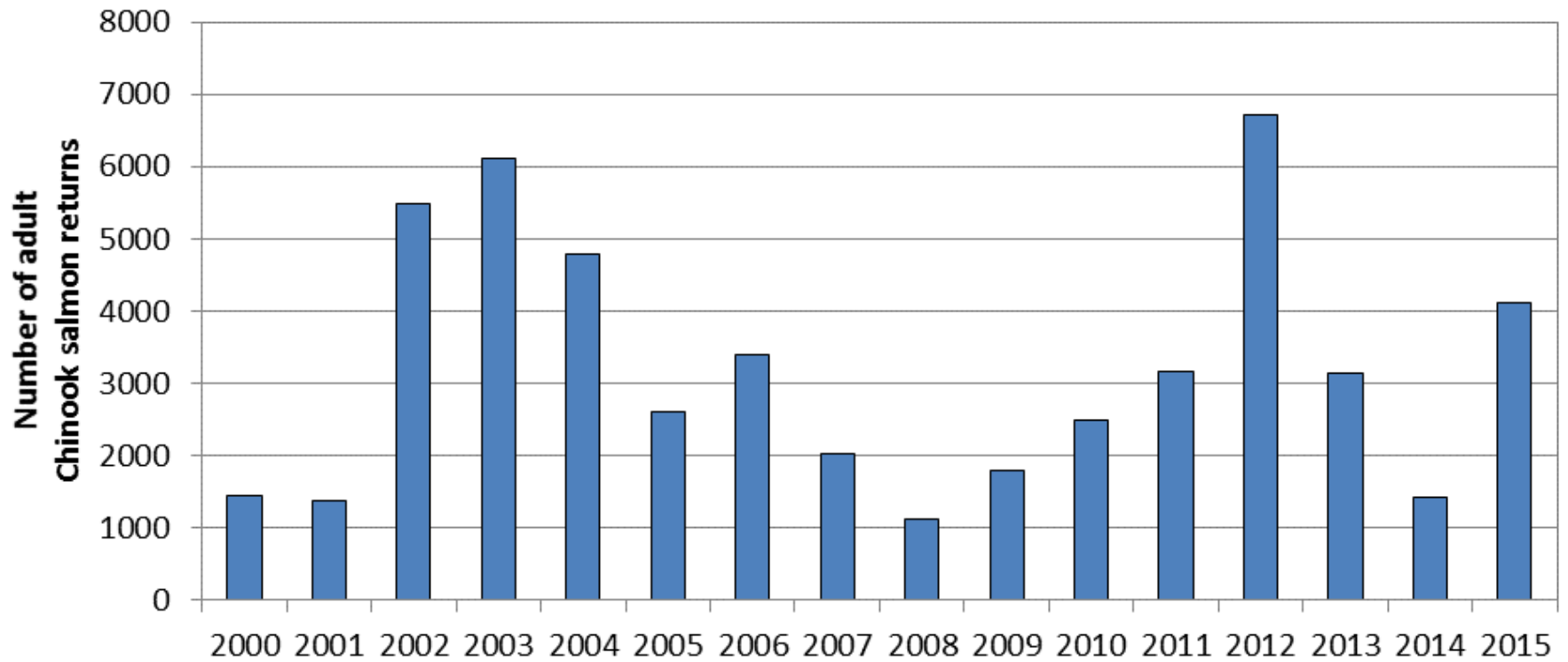
Lifecycle / Basin Wide Monitoring



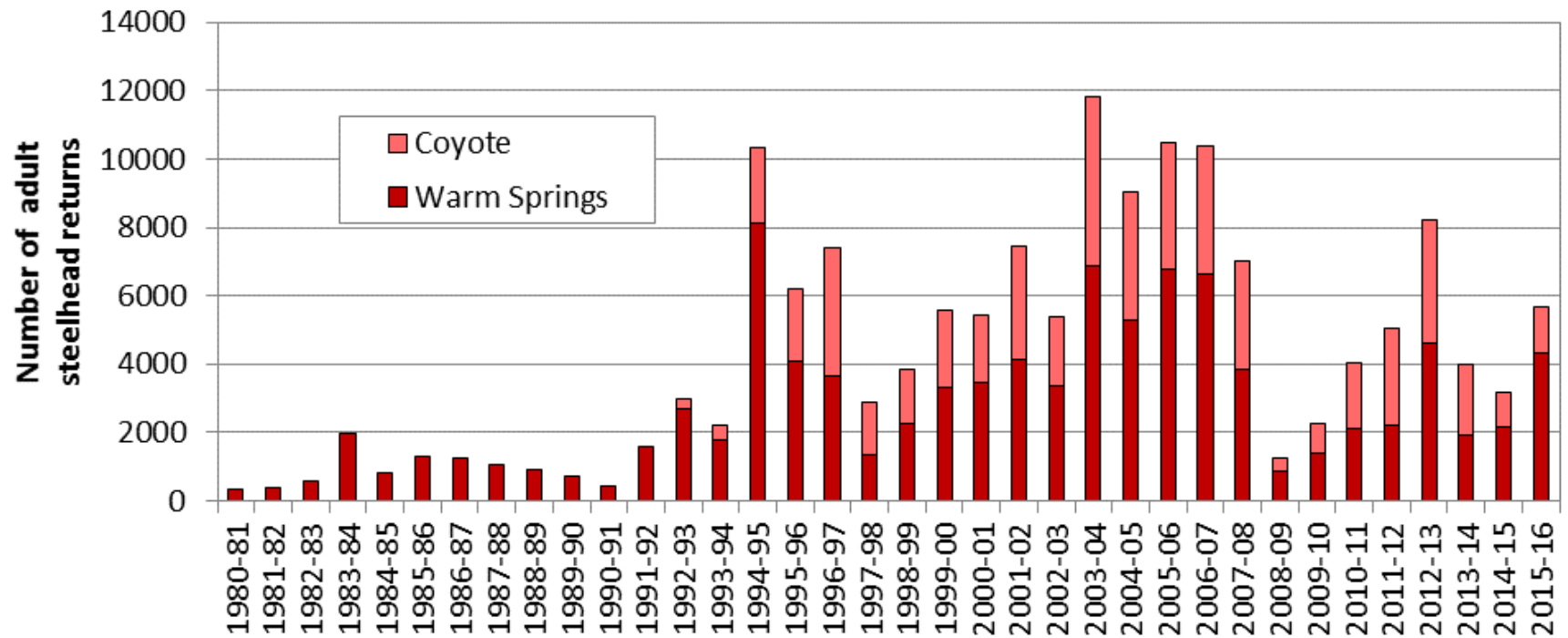
Chinook Life Cycle: Adult Count



Chinook Salmon

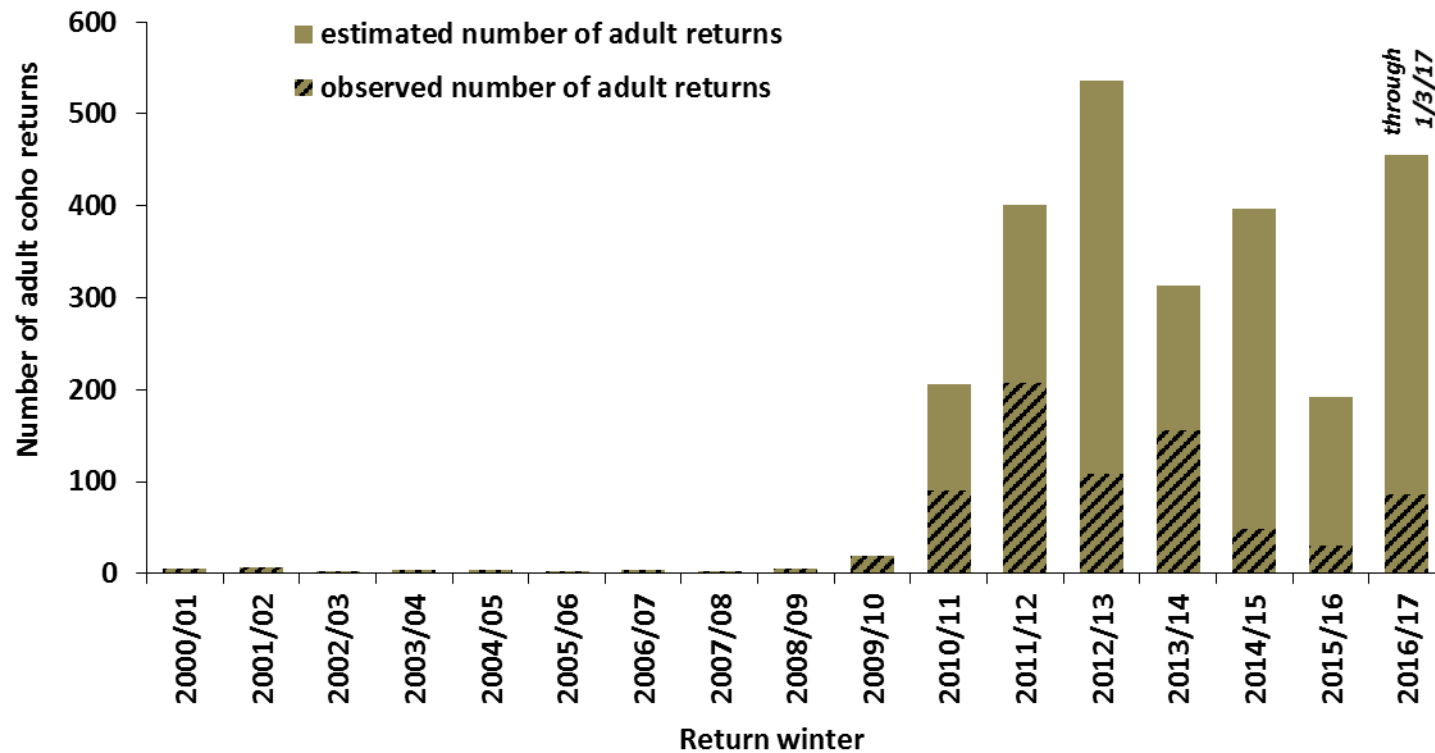


Steelhead - Hatchery Returns

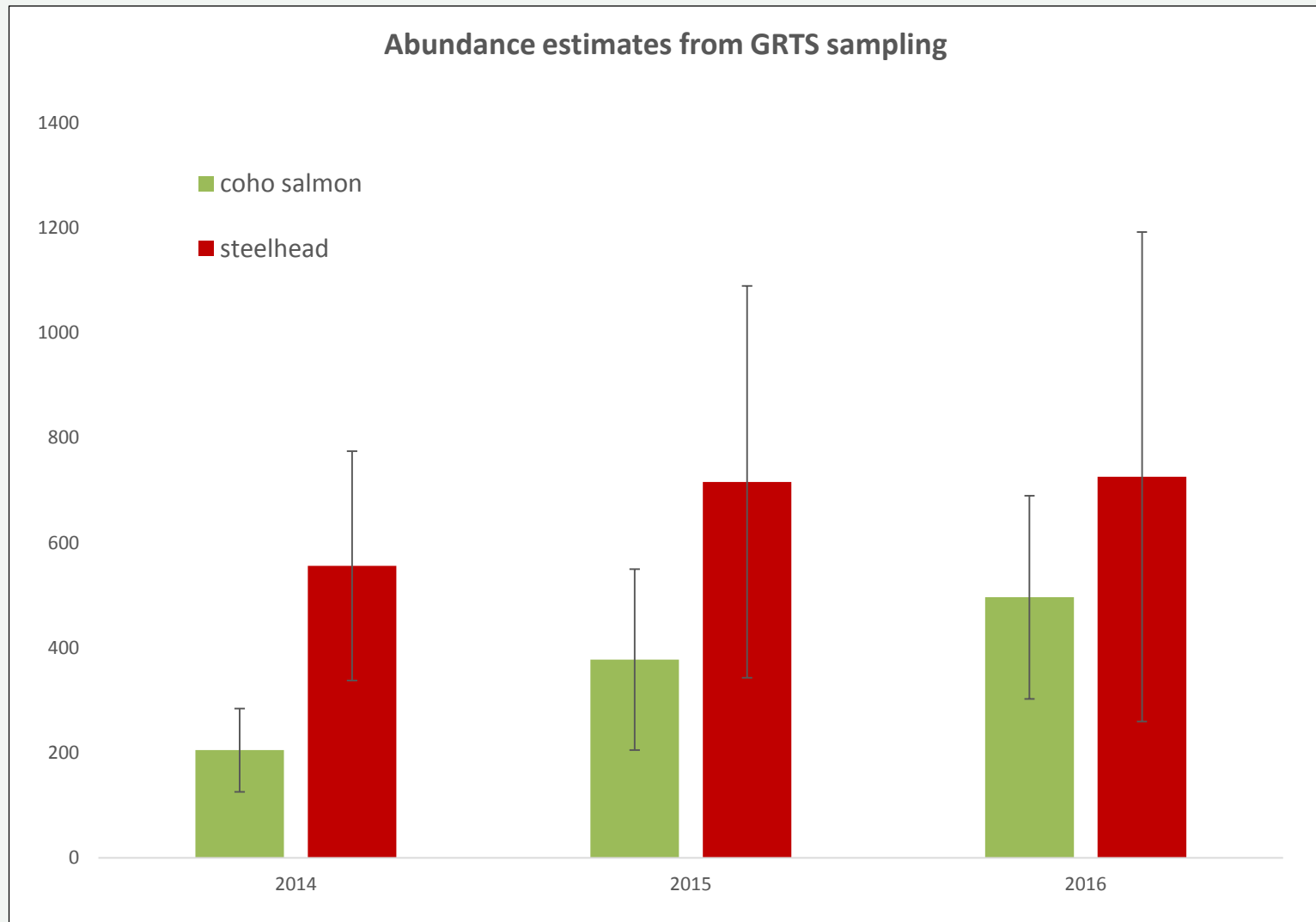


Coho Salmon

Adult coho returns to the Russian River basin



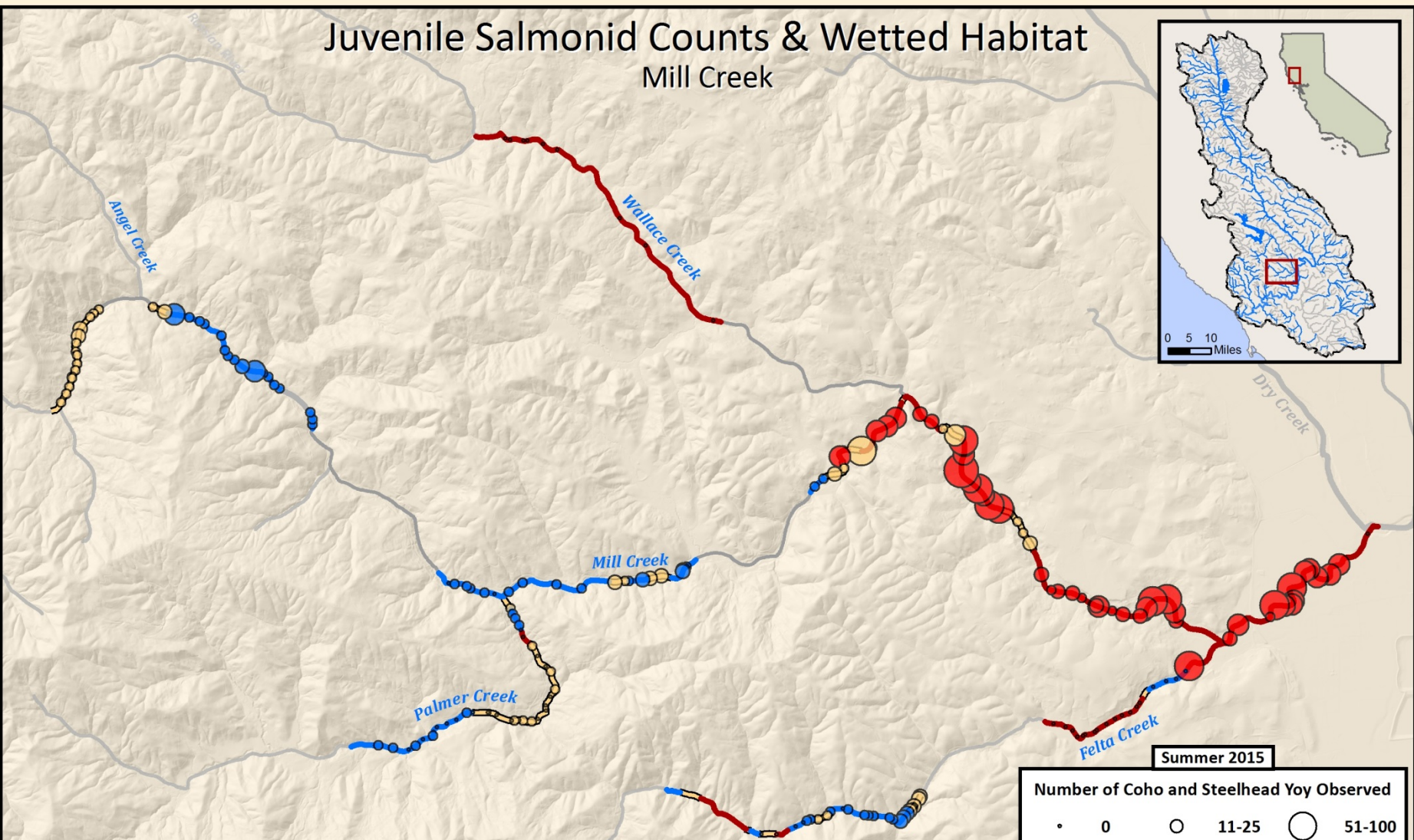
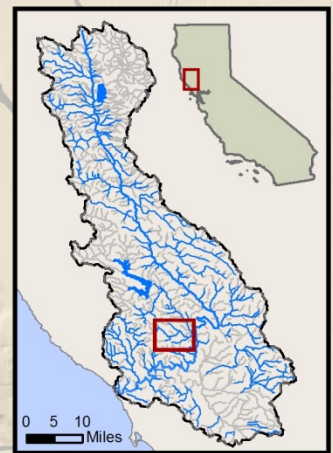
Recent Abundance Trends



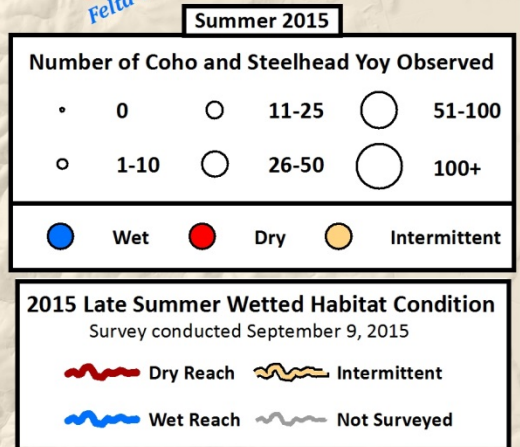
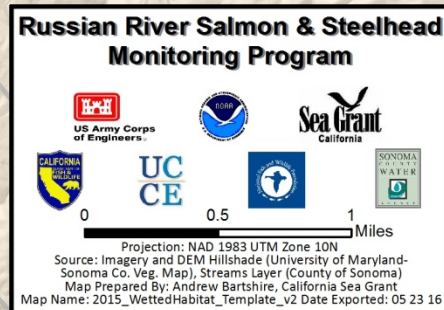
Measuring Drought Impacts



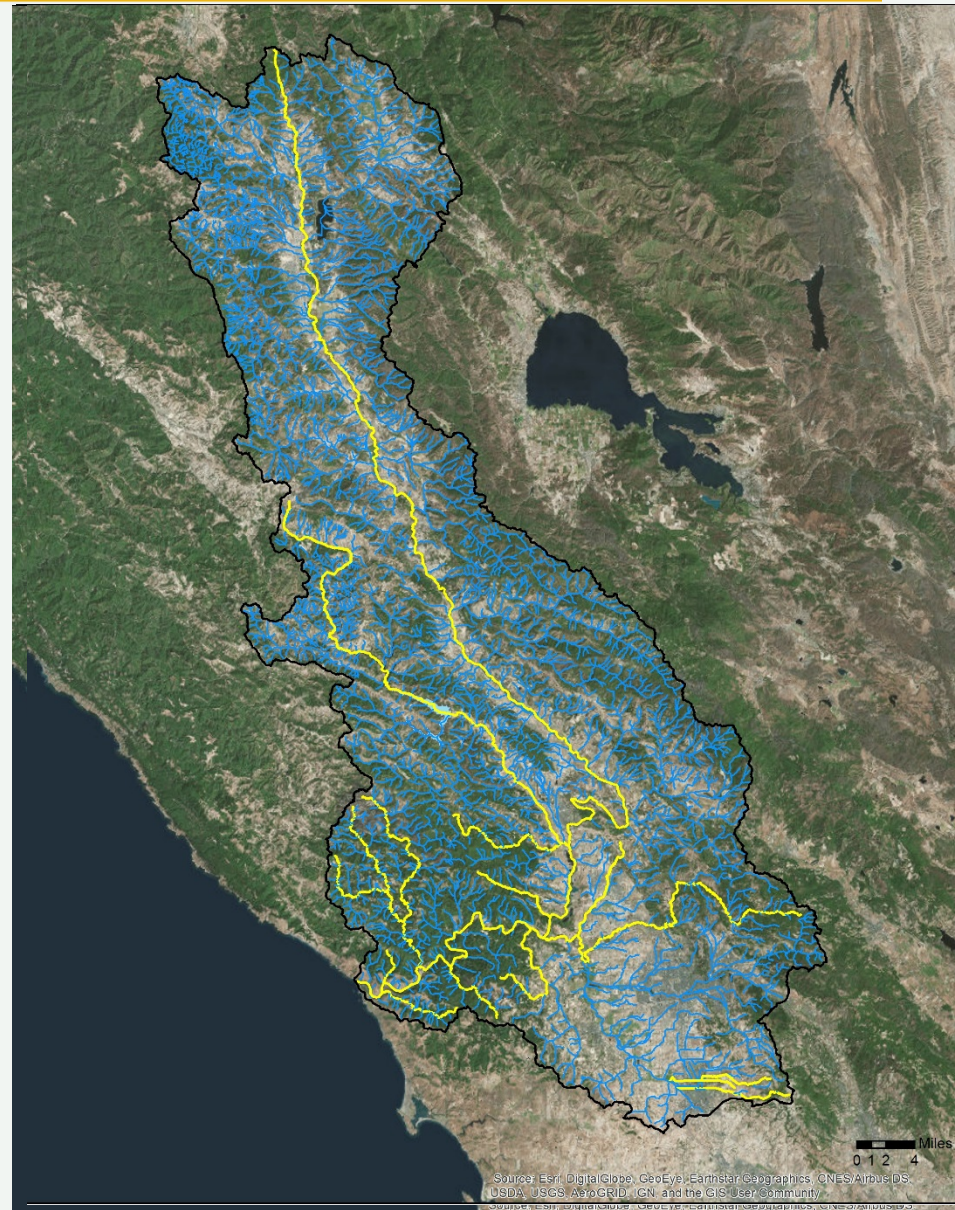
Juvenile Salmonid Counts & Wetted Habitat Mill Creek



Habitat condition	Stream length (km)	Coho yoy	Steelhead yoy	All juvenile salmonids
dry	10.5 (48%)	88 (50%)	1,707 (68%)	1,919 (65%)
inter	4.7 (22%)	58 (33%)	460 (18%)	621 (21%)
wet	6.4 (30%)	31 (18%)	345 (14%)	427 (14%)



NATIVE WARM WATER FISH



Native Warm Water Fish

DISTRIBUTION AND ABUNDANCE LIKELY REDUCED

DOING AS WELL OR BETTER THAN COUNTERPARTS RANGE WIDE

NO WARM WATER SPECIES THREATENED WITH EXTINCTION



Biological Opinion Requirements

Reduce High
Summer Flow

Dry Creek Habitat
Improvement

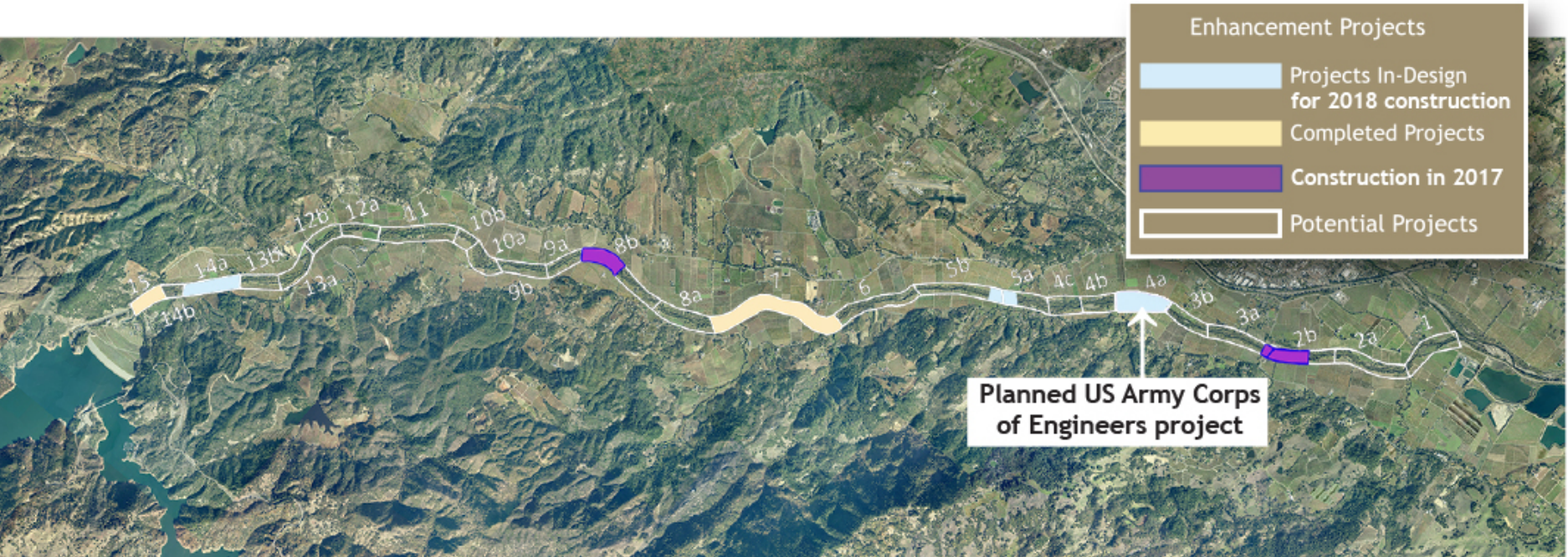
Fish Passage
Upgrade

Estuary Management



DRY CREEK HABITAT ENHANCEMENT PROJECT REACHES AND TIMELINE

COMPLETED AND IN-DESIGN PROJECTS, 2016



	Milestone 1	Milestone 2	Decision point	Milestone 3
Complete design phase. Permitting. Landowner agreements. Begin construction	1 mile of habitat in Dry Creek completed and work on miles 2 & 3 begins	Complete enhancement of miles 2 & 3	Evaluate the success of the enhancement projects	Enhance 3 additional miles of habitat in Dry Creek for a total of 6 miles
2012	2014	2017	2018	2020



Farrow Backwater – October 17, 2013



Farrow Backwater – December 11, 2014



Farrow Backwater – May, 2015



Farrow Backwater – May, 2016

How the project weathered high water



Questions

David Manning

Environmental Resources Manager

Sonoma County Water Agency

David.Manning@scwa.ca.gov

707-547-1988

