

Sonoma County Water Agency Fire Update

Sophie Hallam-Eames

Public Affairs Program Specialist

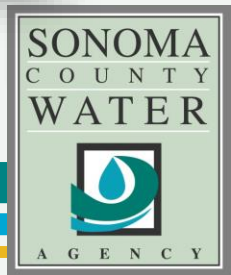
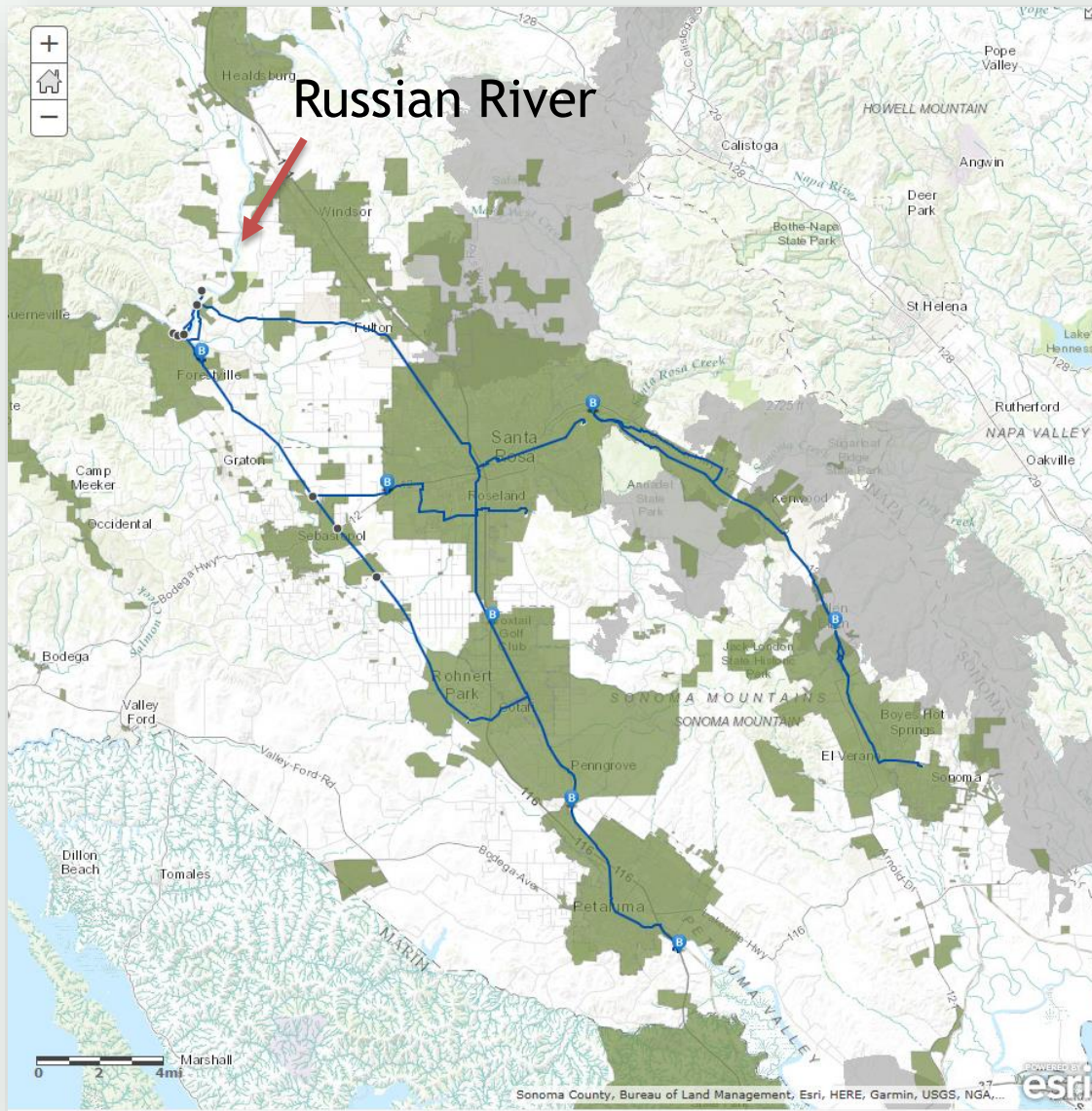
Sophie.HallamEames@scwa.ca.gov



Sonoma County Water Agency

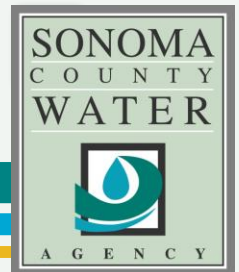
- Wholesale Water Provider
- Wastewater Treatment
- Flood Protection





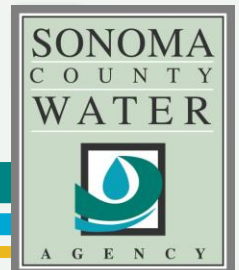
Ongoing Concerns

- Drinking water is safe, continually monitored
- 617 streams in areas affected by fire in Sonoma County
- Elevated risk of flooding, debris flows, and landslides
- Need to prevent ash, debris, pollutants from entering streams



Regional Collaboration

- Sonoma County Water Agency
- North Coast RWQCB
- Sonoma County
- City of Santa Rosa
- Sonoma County Agricultural Preservation and Open Space District
- Sonoma County Regional Parks
- Sonoma County Transportation and Public Works
- Sonoma RCD, Gold Ridge RCD
- Non profits and private partners



Regional Collaboration

Urban Areas

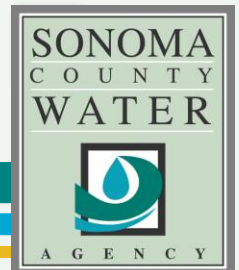
- Cleaning storm drains
- Installing wattles and sandbags
- Plans to capture, store, and treat storm water
- Assessing impacts to flood protection

Rural Areas

- Debris-capture in culverts

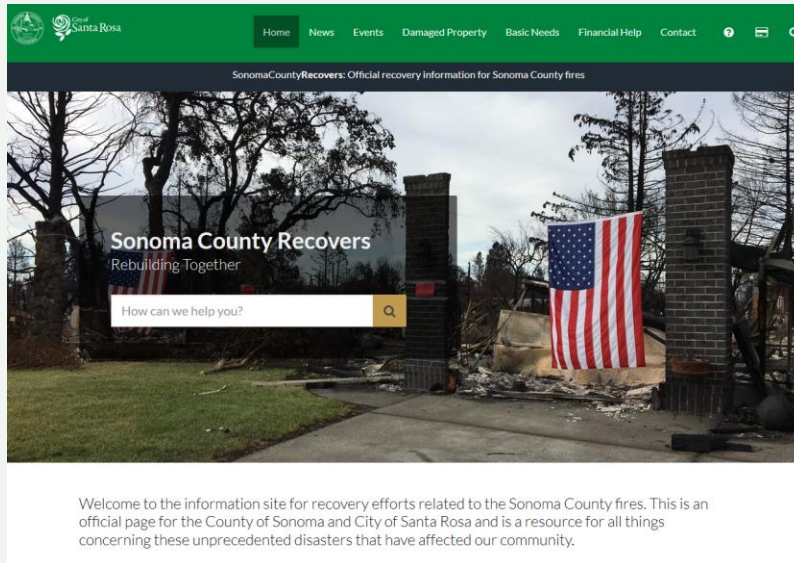
Water Quality Monitoring

- Water quality strategy being developed for waterways



More Information

- www.sonomacountyrecovers.org



- www.sonomacountywater.org/fire

Questions?

Sophie Hallam-Eames

Public Affairs Program Specialist

Sophie.HallamEames@scwa.ca.gov

