

North Bay Watershed Association Conference:

The 2017 Fires: Response and Planning for Future Risks

Supervisor Belia Ramos

County of Napa

April 6, 2018



A Tradition of Stewardship
A Commitment to Service

Emergency Response



A Tradition of Stewardship
A Commitment to Service



Emergency Response



A Tradition of Stewardship
A Commitment to Service



Magnitude



A Tradition of Stewardship
A Commitment to Service



Magnitude



A Tradition of Stewardship
A Commitment to Service



Reservoir Inspections



A Tradition of Stewardship
A Commitment to Service



St. Helena Rector Reservoir

Reservoir Inspections



A Tradition of Stewardship
A Commitment to Service



Milliken Reservoir

Public Works



A Tradition of Stewardship
A Commitment to Service



Public Works



A Tradition of Stewardship
A Commitment to Service



Public Works



A Tradition of Stewardship
A Commitment to Service



10.18.2017 14:24

Erosion Control



A Tradition of Stewardship
A Commitment to Service



Free Erosion Control Materials

What: Free straw wattles and wooden stakes

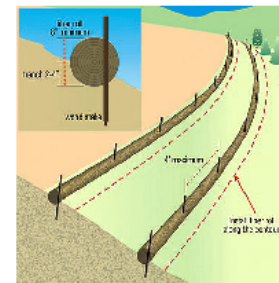
Who: For fire-affected residents of Napa County

When: Starting Jan. 10, while supplies last.

Where: Materials available at the Napa Valley Expo
575 Third Street, Napa 94559
(707) 253-4900 x800

Mon- Fri 9am – 4pm CLOSED Noon to 1pm

Why: Help protect our local creeks and the Napa River from ash and toxic materials by stabilizing burned areas on your property. The Wattle Guys, local producers of straw wattles, have offered free product to Napa and Sonoma County residents to help them protect our fire-damaged watersheds.



Community Outreach



A Tradition of Stewardship
A Commitment to Service



City of Napa - Local Government

October 11, 2017 ·

PLEASE SHARE! All WEDNESDAY, 10/11, updates will be posted here:

UPDATE 4:23PM:

Resources for our Community

The City of Napa wants our residents to be informed, safe and prepared.

Here is what you can do:

UPDATED 4:00PM, Wednesday, 10/11

Air

The air quality is obviously poor and a concern for many people. Wearing an N95 mask is recommended.

If you can see, taste, or feel smoke, you should immediately minimize outdoor activities. This is especially important if you have health concerns, are elderly, are pregnant, or have a child in your care.

Smoke from wildfires and structure fires contain harmful chemicals that can affect your health. Smoke can cause eye and throat irritation, coughing, and difficulty breathing. Learn more here.

Water

Water supply for the of the City is intact, drinkable and available.

There is a precautionary water boil notice in place for the already-evacuated Silverado Country Club area.

The City of Napa is issuing a boil water notice for customers who live on:

Hagen Road

Woodland Drive

Syar Drive

Holly Court

Old Coach Road

Or live in any area North of Hagen Road and east of the Silverado Trail

This includes all of the Silverado Country Club, Monticello Park and Vichy Ave Areas.



Understanding Your Property After Fire

Workshop for land owners and managers who seek guidance related to erosion, trees, and other natural resource concerns

December 6, 6:30 - 8 pm

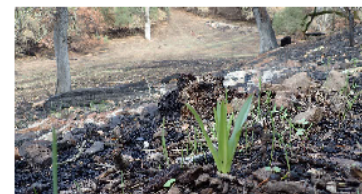
Enchanted Hills Camp, KIVA Room, 3410 Mt Veeder Rd, Napa, CA

December 12, 6:30 - 8 pm

Calistoga Community Center, 1307 Washington St, Calistoga, CA

December 13, 6:30 - 8 pm

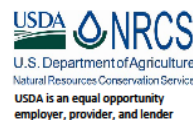
Napa Valley College Community Room (in the Library Building), 2277 Napa-Vallejo Highway, Napa, CA



Workshop Topics:

- Potential resource concerns in post-fire landscapes - erosion, trees, flooding
- Things to observe, do, or not do when getting ready for winter and beyond
- What to do/who to contact if observe problem this winter
- Napa RCD & USDA-NRCS services

RSVP to Frances: 707-252-4189 x3124 or frances@naparcd.org



Tree Species



A Tradition of Stewardship
A Commitment to Service



The Cove at Mt. Veeder



A Tradition of Stewardship
A Commitment to Service



Regrowth



A Tradition of Stewardship
A Commitment to Service



Regrowth



A Tradition of Stewardship
A Commitment to Service



Regrowth



A Tradition of Stewardship
A Commitment to Service

